

RED & WHITE



SWINDON TOWN v WALSALL

Sky Bet League 1
Tuesday 24th November 2015
Kick-Off: 7.45pm
Issue 15




IMAGINE
CRUISING

IMAGINE
CRUISING



DAVID M. COE
FINANCIAL PLANNING LTD

 Nationwide

C|F|M
COTSWOLD
FARM MACHINERY



IMAGINE®
CRUISING

5% DISCOUNT

FOR ALL SWINDON TOWN FANS

TO BOOK CALL 0800 840 5936 & QUOTE IMAGINESTFC



NEW FOR 2015
RIVER CRUISES

IMAGINE.CO.UK/RIVER



VISIT IMAGINECRUISING.CO.UK
CALL FREE ON 0800 840 5936

 **ABTA**
ABTA No Y2901

IMAGINE®
CRUISING

24.11.15 • 7.45PM

THE SQUADS



SWINDON TOWN

MANAGER: Martin Ling



WALSALL

MANAGER: Dean Smith

Lawrence Vigouroux 01	01 Neil Etheridge
Nathan Thompson 02	02 Jason Demetriou
Brandon Ormonde-Ottewill 03	03 Andy Taylor
Fabien Robert 04	04 James O'Connor
Jordan Williams 05	06 Paul Downing
Jordan Turnbull 06	07 Adam Chambers
Drissa Traoré 07	08 Sam Mantom
Yaser Kasim 08	09 Tom Bradshaw
Nicky Ajose 10	10 Romaine Sawyers
Kevin Stewart 11	11 James Baxendale
Momar Bangoura 12	12 Anthony Forde
Wes Thomas 14	13 Craig MacGillivray
James Brophy 15	14 Rico Henry
Jordan Stewart 16	15 Milan Lalkovič
Ben Gladwin 17	16 Matt Preston
Louis Thompson 18	17 Reece Flanagan
Jeremy Balmy 19	18 Kieron Morris
Jonathan Obika 20	20 Amadou Bakayoko
Will Randall 21	21 Jordan Cook
Lee Marshall 22	22 Liam Kinsella
Josh Cooke 23	23 Liam Roberts
Jermaine Hylton 24	24 Levi Rowley
Tyrell Belford 25	25 Kyle Rowley
Anton Rodgers 26	26 Isaiah Osbourne
Bradley Barry 27	27 George Evans
Ellis Iandolo 28	30 Dan Jezeph
Raphael Rossi-Branco 29	
Tom Smith 31	
Henrik Ojamaa 32	
Adam El-Abd 34	

MATCH OFFICIALS

Referee: K Hill
 Assistant Referee: A Coggins
 Assistant Referee: M Derrien
 Fourth Official: D Bushell



DEACONS

T: 01793 522 072 / 527 530
www.deacons-jewellers.com

NEXT UP

Rochdale
 Saturday 12th December
 Kick-Off: 3.00pm
 Sky Bet League 1

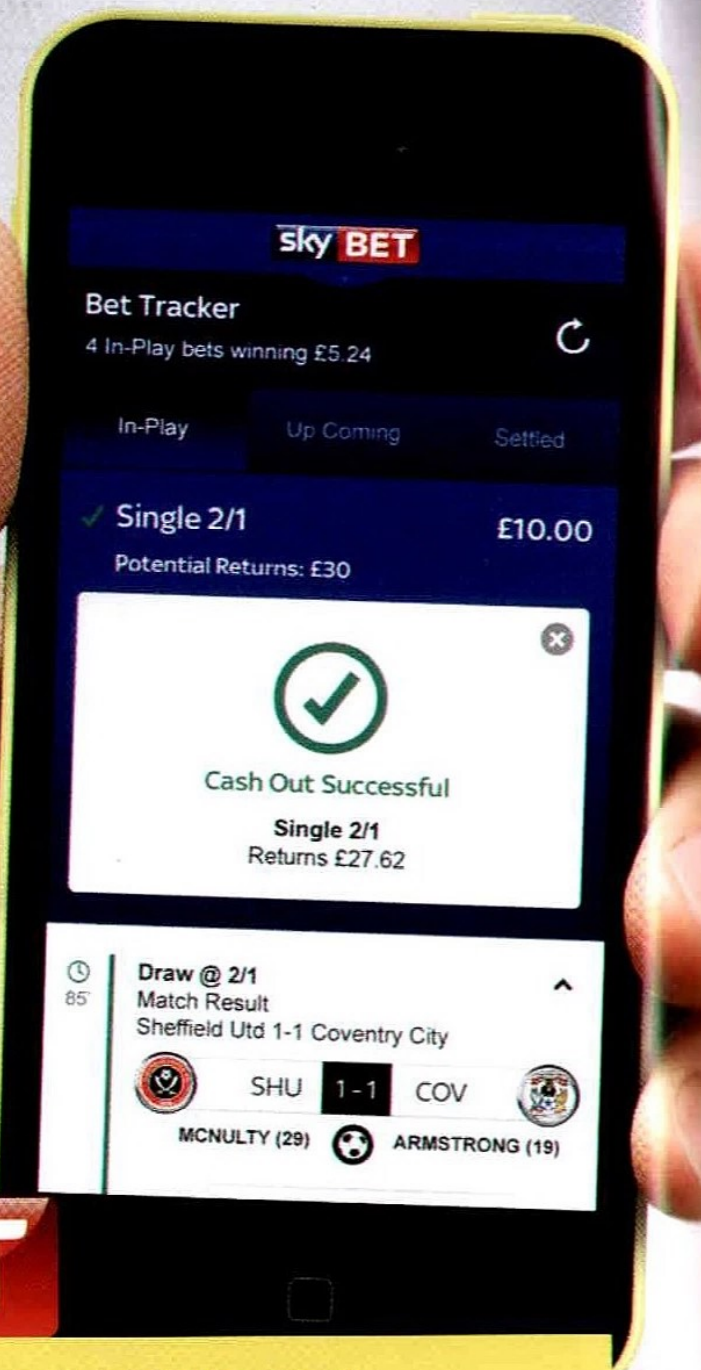


WE'RE
MAKING
BETTING
LESS
MISSED OUT
MORE
CASHED OUT

sky **BET**

CASH OUT

BET STATUS, MATCH STATS
AND CASH OUT – ALL IN
ONE PLACE



ARE YOU IN?
skybet.com



SWINDON TOWN FOOTBALL CLUB

The County Ground, County Road,
Swindon, SN1 2ED

Switchboard: 0871 876 1879

STFC Store: 0871 876 1993

Websites: www.swindontownfc.co.uk
www.stfcdirect.com

Honorary President: Mike Spearman
Chairman: Lee Power
Directors: Lee Power & Sangita Shah
Non-Executive Directors: Veljko Jovanovic, Roger Terrell, Xavier Austin
General Manager: Steve Anderson
First Team Manager: Martin Ling
First Team Coach: Luke Williams
First Team Coach: Ross Embleton
Head of Goalkeeping: Steve Hale
Academy Manager: Jeremy Newton
Under-18s Manager: Scott Lindsey
13-16s Phase Coach: Alan McLoughlin
Academy Skills Coach: Sean Wood
Sports Scientist: Michael Cooper
Physiotherapist: Paul Godfrey
Video Analyst: Alex Seager
Kit Manager: Roger Jones/Mark Hampson

CLUB HONOURS

Football League Cup Winners: 1968/69
FA Cup Semi-Finalists: 1909/10, 1911/12
Football League Second Tier Play-Off Winners: 1989/90, 1992/93
Football League Third Tier Winners: 1995/96
Runners-Up: 1962/63, 1968/69
Play-Off Winners: 1986/87
Football League Fourth Tier Winners: 1985/86, 2011/12
Southern League Winners: 1910/11, 1913/14
Football League Trophy Finalists: 2011/12
FA Youth Cup Finalists: 1964
FA Charity Shield Runners-Up: 1911
Anglo-Italian Cup Winners: 1969/70
Anglo-Italian League Cup Winners' Cup Winners: 1968/69
Dubonnet Cup Winners: 1909/10
Wiltshire Cup Winners: 1886/87, 1887/88, 1888/89, 1889/90, 1890/91, 1891/92, 1892/93, 1896/97, 1903/04, 1919/20

Editor: Tom Otrebski

Design: Daniel Parker

Contributors: Danuta Otrebska, Paul Ploymann, Sam Perkin, Laura Morgan, Clive Maguire, Shane Hewlett, Sian Griffiths

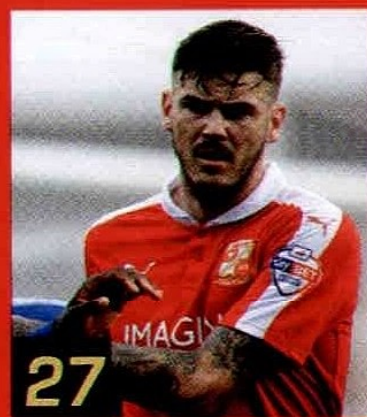
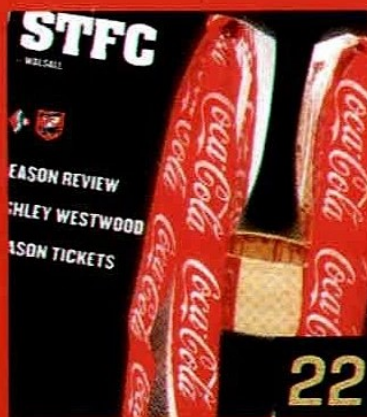
Photography: Rob Noyes, PA Photos, Action Images, Callum Hampson, Richard Wintle/Calyx

Published by: Amberley Court Associates Ltd

For advertising sales call: 0844 358 2668



INSIDE RED & WHITE



06

MANAGER'S NOTES

Martin Ling

09

FROM THE TOP

Steve Anderson

11

CLUB NEWS

All the latest from SN1

13

CAPTAIN'S COLUMN

Nathan Thompson

14

TONIGHT'S VISITORS

Walsall

22

PROGRAMME VAULT

R & W delves into the archives

24

COMMERCIAL NEWS

With Adam Wainwright

27

FEATURE INTERVIEW

With Ben Gladwin

37

TREATMENT ROOM

With Town physio, Paul Godfrey

38

ACTION REPLAY

v Scunthorpe United

44

JUNIOR REDS

Fun and games for JRs

49

SUPPORTERS CLUB

The latest from the Supporters Club

51

PASSING BACK

Trevor Anderson's hat-trick of penalties

59

SUPPORTERS' TRUST

The latest from the Trust

60

FEATURE INTERVIEW

With Wes Thomas

65

ACADEMY UPDATE

With Alan McLoughlin

67

UNDER-18S

With Scott Lindsey

70

STFC LADIES AND GIRLS DEVELOPMENT

With Laura Morgan and Shane Hewlett

72

STFC FITC

Community news update

76

TICKETS AND TRAVEL

The latest ticket information

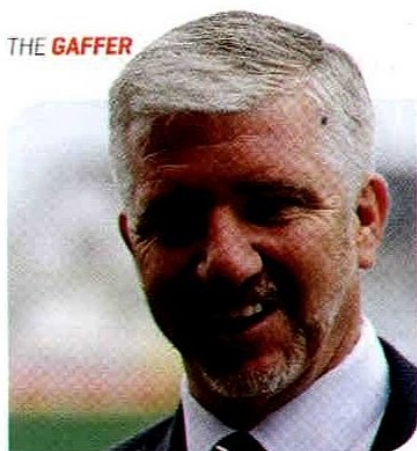
78

GAME CENTRE

2015/16 Fixtures

SWINDON TOWN FOOTBALL CLUB STAFF:

Club Secretary Louise Fletcher / **Assistant Secretary** Michelle McDonald / **Head of Finance** Debbie Carney / **Account Assistants** Sarah Stevens / **Operations and Retail Manager** Karen Randall / **Commercial Manager** Adam Wainwright / **Sales & Marketing Executives** Kay Wainwright & Rachel Burt / **Press Officer** Tom Otrebski / **Social Media Manager** Callum Hampson / **Stadium Maintenance** Fred Brown & Matthew Vernon / **Ticket Office Manager** Jason McGinley / **Head Groundsman** Marcus Cassidy / **Academy Administrator** Karen Almsow / **Charity Co-Ordinator** Sian Griffiths / **Club Chaplain** Simon Stevenette / **Centreplate Catering Venue Manager** Chris Abrook / **STFC FITC** Mike Spearman (STFC Honorary Patron), Kirsteen Fraser (STFC Chairman), Clive Maguire, Jon Holloway, Shane Hewlett, Andy Ealey, Steven Pawelek, Ziggy Wardale, Tom Cox



MARTIN LING

ttc

the
transportation
consultancy

Good evening and welcome back to the County Ground. Tonight I face one of my best friends in the opposition dugout.



I've scouted for Walsall over the past two-and-a-half years ever since I came out of Torquay. The manager, Dean Smith is one of my best friends in football. Ross Embleton has also worked for them so it's a club we both know well. It's funny - I've not watched them very much because you always watch the opposition but I know enough about them. For the 90 minutes Dean and I won't be friends but after and before we certainly will be. I've played against friends before - I've played against John Gorman's sides as one example but not like this. We are best buddies but even if we had a training game against each other we'd want to win!

Make no bones about it, he does absolute wonders on the budget he's got and he's got

"The main thing for me was I asked you to get behind the players and I thought you did that very well. I will be asking for more of the same tonight."

them into a position where he's being talked about for other clubs. He's got them above where they should be - it's no fluke after 16 games of the season but for them to maintain it would be an absolute miracle and he'd be the first person to say that with the budget he has there. You have to respect where they are and you have to respect what they've done so far. We know it's going to be a difficult game and we'll have had them watched on Saturday. He plays the game the same way I want to play so it will be two passing teams playing against each other tonight. I'm writing these notes before Saturday's game due to programme printing deadlines but coming off the back of the Fleetwood game, it will be a quick changeroom

for the players and we're going to have to put our best foot forward to try and get three points out of this fixture.

Looking back, it was nice to get the win for the fans against Scunthorpe. It was a good atmosphere in the ground but you could feel the nervousness and edginess around the place. If you haven't won at home since August that's bound to be the case and I think that was the case for players and fans alike. The main thing for me was I asked you to get behind the players and I thought you did that very well. I will be asking for more of the same tonight.

Martin Ling
FIRST TEAM MANAGER

**"...it was nice
to get the
win for the
fans against
Scunthorpe.
It was a good
atmosphere..."**

Order your '65' Plate today
Mention Swindon Town FC at your
local Allen Ford - Swindon to claim your
special discount



Swindon
Drakes Way
SN3 3LL

allenford
www.allenford.com/west

01793 646600

Open: Mon-Fri 8.30am - 6.30pm, Sat 9.00am - 5.00pm, Sun 10.00am - 4.00pm



FROM THE TOP

Good evening and welcome back to the County Ground for tonight's visit of Walsall.



It was a most welcome three points the last time we played here at SN1 against Scunthorpe. Rapha Rossi-Branco got the scoring underway before Nicky Ajose showed brilliant composure to double our lead with a wonderful finish. The mood around the place afterwards was as upbeat as I've seen it this season – let's hope those positive vibes continue this evening. I'm writing these notes before Saturday's match at Fleetwood so let's hope we're all reflecting on another three points from our trip to the Fylde coast.

Walsall were one of those sides that came away with something from their visit to Wiltshire last season and they have made a magnificent start to this term under Dean Smith, someone who Martin

knows very well. Again, it will be another difficult test for our young side but, with a number of key first team members now back in the fold, I know that we'll have a strong, hungry team ready to face the Saddlers this evening.

Off the pitch, I would just like to draw your attention to a couple of events that are taking place in the build-up to the festive period. Firstly, I'd like to say a big thank you to First City Nursing Services who have agreed to part-fund the Senior Citizens' annual Christmas lunch alongside the STFC Supporters' Club. Without your combined backing, we would not have been able to proceed with such an important tradition. That takes place on Thursday 10th December between 12pm and 3pm. The following Monday

"The mood around the place afterwards was as upbeat as I've seen it this season – let's hope those positive vibes continue this evening."

[14th December], we will be hosting the Junior Reds' annual Christmas bash – something I know is very popular with all our junior members. For more details on both of these events, please head to the news page of this programme or visit our website www.swindontownfc.co.uk.

Finally, I would just like to mention that we will be holding a Christmas Carol Service once again this year. Confirmed details will be released in the very near future but it would be lovely to see as many of you there as possible, so start warming up your voices!

Steve Anderson
GENERAL MANAGER

NATIONAL LOGISTICS SOLUTIONS

Proud to support
Swindon Town FC

Transport & Distribution

Warehousing

Supply Chain Management

- Broxburn
- Chelmsford
- Leeds
- Telford
- Swindon



COUNTY GROUND HEADLINES

All the latest from SN1.

SENIOR CITIZENS' CHRISTMAS LUNCH



First City Nursing Services will part-fund this year's Senior Citizens' Christmas Lunch alongside the STFC Supporters Club.

The club would like to thank both parties for their support of the event which will take place on Thursday 10th December in the Legends Lounge at the County Ground between 12pm and 3pm. As well as a traditional Christmas lunch, there will also be bingo and a raffle after the meal.

To apply for a place please either email karenrandall@swindontownfc.co.uk or call 0871 876 1879 and leave a name and the number of spaces required.

JUNIOR REDS CHRISTMAS PARTY

The 2015 Junior Reds Christmas Party will take place on Monday 14th December between 5pm and 7pm. The whole Swindon Town squad will be in attendance.

Places are limited so the 150 available slots will be allocated on a first-come, first-served basis.

To confirm your attendance, please email karenrandall@swindontownfc.co.uk. The JR's membership number MUST be included on the email.

Further details will be sent to confirmed attendees nearer the time.

SIX/EIGHT-MATCH TICKET PACKS LAUNCHED



Following on from last season's success, Swindon Town would like to offer supporters another opportunity to select a six or eight-match ticket package that suits their personal requirements.

These packages offer great savings on standard category matchday prices. Season Tickets offer the greatest value for money but they are not always suitable for all supporters which leads to many fans attending fewer matches.

From Season Ticket holders to matchday ticket purchasers, it is important that we listen to all Town fans and, where possible, implement new schemes which we hope will help to take our club forward. This will allow us all to benefit from exciting and entertaining football and, ultimately, further the quest for success on the pitch.

For supporters wishing to take up the new ticket packs, simply visit our online ticketing site using the link below and, under the memberships tab, choose the ticket package and stand required then proceed to checkout. To add matches to your account in the future, login and add your chosen matches as soon as they go on sale. Your selected matches can be added to your 'match card', printed at home or collected from the pre-booked point at the County Ground on the matchday.

In addition, supporters holding a multi-game 'match card' will receive 5% loyalty cash back on all merchandise purchases made in-store and online.

For any queries, please contact the STFC Store on 0871 876 1993 and select option 2.

Prices are:

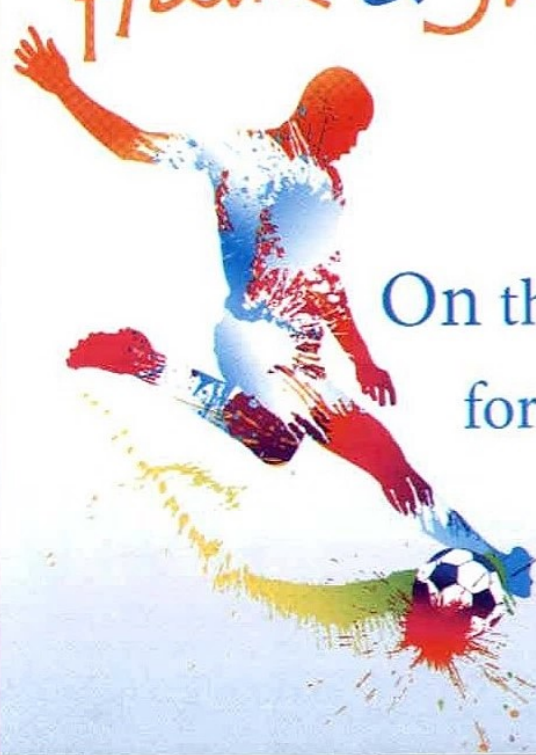
	6-GAME PACKAGE SIDE STAND	6-GAME PACKAGE TOWN END	8-GAME PACKAGE SIDE STAND	8-GAME PACKAGE TOWN END
Adults	£120	£95	£150	£120
Senior/Student	£85	£70	£105	£85
Young Adult 17-19	£70	£70	£75	£75
Junior Under-17	£35	£35	£45	£45

Morgan Stanley

Morgan Stanley Investment Management is proud to support
Swindon Town Football Club
vs Walsall FC

© 2015 Morgan Stanley

Haine & Smith
OPTICIANS



**On the Ball
for Eyecare**

See Every Goal

*As the Matchball Sponsor we are
offering all Swindon Town fans*

£10 OFF
an eye test or glasses

Simply show this advert at your local
Haine & Smith practice.

Gorse Hill 105 Cricklade Road
01793 522572

Highworth 22 High Street
01793 762204

Regent Street 45c, Swindon
01793 487888

Wroughton 8 Ellendune
01793 813054

Terms and conditions apply. Only valid at time
of purchase before 31/03/2016. One per person.
May not be used with any other offer. NHS eye
tests are free to eligible patients.



/haineandsmith |



haineandsmith.co.uk

Haine & Smith
OPTICIANS



CAPTAIN'S COLUMN



Good evening and welcome to a County Ground under lights for the final home game of November. It has been a month of mixed emotions. While we have seen a huge turnaround in performances and picked up our first win in 11 games, we've also exited the FA Cup in the first round again.

Nevertheless, I always look at the positives and no distractions from the league and no international breaks until March, hopefully now can be our time to gain some momentum and climb the table.

As these programme notes went to print on Friday, I'm unable to reflect on the Fleetwood game, so my fingers are crossed that we return with three points and that we all have a smooth run travelling up the M6 to support the boys.

Over the past month, the management team have worked meticulously on getting back to dominating our games. We have an extremely talented squad who are all comfortable with the ball at their feet. In recent games, we've had small periods of possession but haven't managed to convert that into dominating longer, sustained spells of the game. But this takes practice and we're on the right tracks.

When opposing teams set up against us, they will be prepared to not see much of the ball, but it's up to us to keep moving a team from side-to-side during a game. Then, in that split moment one opposing player switches off, or isn't prepared to cover that extra five yards, we exploit the space and capitalise on it.

Contrary to media reports, which I found rather bamboozling, I thought we did this very well on Saturday. We didn't get bored of keeping the ball moving, even

when the cries were to "get the ball forward". Patience was key and allows us to create big pockets of space for Ben Gladwin and Anton Rodgers to work in. In order to continue our improved performances, we need to carry on playing this way and work on being more precise and clinical with our final ball.

This week has been slightly different for me and my injury progress. Usually I would do my rehab work around the team's training session so that I can watch and be there to offer my support. However, this week I was given a rare and special opportunity to work with a rehab team at St. George's Park near Burton.

This is England's base for Roy Hodgson, his background staff and all of our English international teams, from the first team men and women, to our younger age groups. Through the PFA, St George's Park offer a four-day residential course for players who have sustained long term and/or complex injuries. The facility was phenomenal and for lower-league players, it's a real taste of what the elite clubs can offer to rehabilitate their players in-house.

On Wednesday afternoon, I spent the session on an underwater treadmill. This allowed me to run without putting the force through my injury, enabling me to get vital cardio-vascular training in which has been tricky on a regular treadmill/cross-trainer. This machine

alone was worth £500,000, so at such a bargain price for a treadmill, I think I may well have twisted the chairman's arm in to purchasing one, as you do!

But in all seriousness, the feedback I received off the physiotherapists at the centre was extremely positive and considering the extent of the tear, I made big improvements in the week and I'm currently ahead of schedule, which made my visit extremely rewarding.

Back to business and tonight we entertain a team who has a very similar ethos to us. Under Dean Smith's guidance, Walsall have made huge steps forward and will come to the County Ground this evening looking to dominate the ball. We don't face many teams in this league with this philosophy and it will therefore test our patience out of possession and could turn the match into something like a game of chess.

One thing that Walsall's success does prove though is that regardless of the money spent on the team, if you are willing to be brave with the ball, dominate possession and not just kick it forward and feed off the bits, you can be successful in this league.

Here's to a successful night of three points.

Nathan Thompson
TEAM CAPTAIN

THE VISITORS

WALSALL

The Saddlers arrive at the County Ground this evening as one of the division's pace-setters having enjoyed a flying start to the season...

Last term was an historic one for Walsall Football Club. In the league, the Saddlers finished in 14th place, nine points above the drop zone and a Capital One Cup exit in the second round to Crystal Palace was followed by a defeat in the first round of the FA Cup at the hands of rivals, Shrewsbury Town following a replay. Hardly grounds for an historic season, I hear you cry. Well, it was the Johnstone's Paint Trophy which brought the most success for the Saddlers as they reached the Wembley final – the first time a Walsall side had ever made it to the famous old [new] stadium. Their journey to the Arch began on an October evening at Rochdale where Mathieu Manset scored the only goal of the game. A tricky-looking home tie against

Sheffield United was navigated successfully thanks to Romaine Sawyers' goal. The Area semi-final against Tranmere ended 2-2 at Prenton Park after Michael Cain had equalised for the visitors ten minutes from time, teeing up a straight-to-penalties scenario which Walsall won 5-4. The Area Final appeared a much tougher prospect against promotion hopefuls Preston North End. The Saddlers stunned their opponents in the final ten minutes at Deepdale in the first leg; a double from Anthony Forde and Tom Bradshaw handed them a two-goal advantage going into the second half of the tie. On a tense evening at the Banks's Stadium, they held on to register a 0-0 draw and secure a place at Wembley for the first time in their 127-year history. Sadly for



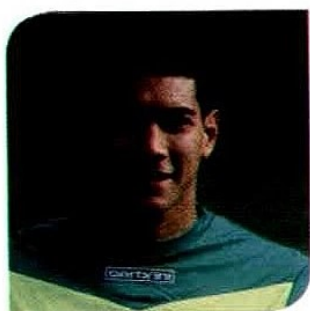
ROMAINE SAWYERS

the Saddlers, they were beaten 2-0 by Bristol City in the final.

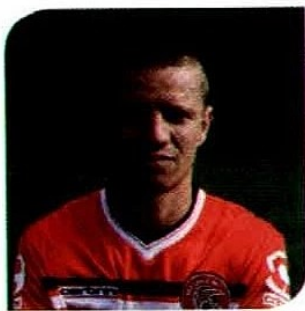
This term, Dean Smith's men started magnificently, winning six of their opening seven games in all competitions. They tasted defeat for the first time in early September, bowing out of the Johnstone's Paint Trophy at the first time of asking before losing at home to Bury four days later.

"Last term... they reached the Wembley final - the first time a Walsall side had ever made it to the famous old (new) stadium."

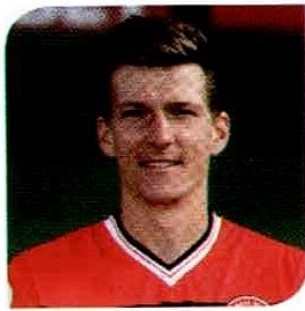
An impressive run in the Capital One Cup - knocking out Nottingham Forest and Brighton & Hove Albion along the way - set up a third round clash with Chelsea at the Banks's Stadium where the Blues ran out 4-1 winners. Since that tie in late September, the Saddlers have (at the time of writing) lost just once; a 2-1 home reverse against Chesterfield.

**NATHAN ETHERIDGE**

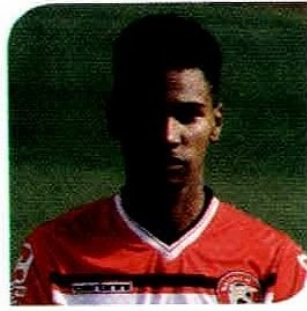
The Philippines International is a graduate of the youth ranks at Fulham and spent time away from Craven Cottage on loan at Charlton, Bristol Rovers and Crewe in the early part of his career. In 2014, he joined Oldham Athletic on a short-term deal and enjoyed a stint on loan with Charlton during his time at Boundary Park, going on to sign a short-term deal at the Valley. After his release from the Addicks, he joined Walsall in the summer.

**JASON DEMETRIOU**

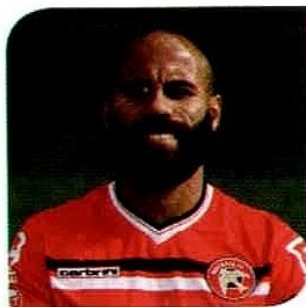
Formerly of Leyton Orient, the full-back progressed through the ranks at Brisbane Road before going on to make nearly 150 league appearances for the O's. In 2010, he moved abroad to further his international prospects and has spent the past five years in Cyprus with AEK Larnaca and Anorthosis Famagusta, while also going on to be capped by the Cypriot national team. In the summer of 2015, he put pen to paper on a deal with Walsall.

**PAUL DOWNING**

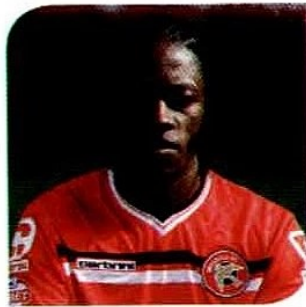
The centre-half graduated from the youth academy at West Bromwich Albion making it onto the bench for the Baggies before spending time on loan with Hereford, Rotherham, Shrewsbury and Barnet. In the summer of 2012 he was released from the Hawthorns and joined Walsall. Since his move to the Banks's Stadium, he has gone on to become a regular at the heart of the Saddlers' defence and recently penned a contract extension.

**RICO HENRY**

The 18-year-old only made his Saddlers debut last season but has quickly become a regular fixture for Dean Smith this term. A graduate of the youth ranks at the Banks's Stadium, Henry made his senior bow against Tranmere in the Johnstone's Paint Trophy last December before making his first league appearance four days later against Barnsley. This term, he has scored his first goals for the club: his first, a late winner against Brighton in the Capital One Cup.

**ADAM CHAMBERS**

A great servant to Walsall Football Club, Chambers started his football career with Midlands rivals, West Bromwich Albion. After graduating from the youth ranks in 1999, he spent six years at the Hawthorns and even enjoyed a loan stint at Sheffield Wednesday. Following a brief spell with Kidderminster Harriers, he joined Leyton Orient in August 2006. Nearly 200 appearances later, he moved to the Banks's Stadium where he has surpassed the double-hundred appearance mark.

**ROMAINE SAWYERS**

Another graduate of the West Bromwich Albion youth system currently in the first team ranks at Walsall, Sawyers' first taste of life with the Saddlers came in a loan spell in March 2013. Later that summer, he completed a permanent move to the Banks's Stadium following his release from the Hawthorns. Prior to his move, he also spent time on loan at Port Vale and Shrewsbury Town. He has already surpassed his goal tally from last term.

**MILAN LALKOVIC**

The Slovakian came through the ranks at Premier League giants, Chelsea but spent most of his time at Stamford Bridge out on loan. After stints at Doncaster Rovers and abroad with Dutch Eredivisie side, ADO Den Haag and Portuguese side, Vitoria Guimaraes, he spent the 2013/14 campaign with the Saddlers, scoring six goals. After a short stint with Barnsley at the end of last term, he joined Walsall on a permanent deal in the summer.

**KIERON MORRIS**

The Hereford-born youngster graduated from the youth ranks at the Banks's Stadium to earn a professional deal in 2012. A left winger blessed with plenty of pace, Morris spent time on loan at Worcester City before breaking into the Walsall first team, making his first senior start at the end of the 2013/14 season. After starting last season in the team, he spent time on loan with Wrexham before penning a new deal with the Saddlers.

**ANDY TAYLOR**

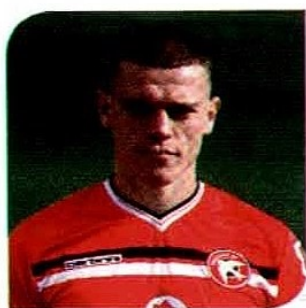
A reliable full-back who started his career with hometown club, Blackburn Rovers. A former England junior international, Taylor also enjoyed loan spells at QPR, Blackpool, Crewe Alexandra and Tranmere before signing a permanent deal at Prenton Park. Arrived at Walsall via a stint at Sheffield United.

JAMES O'CONNOR

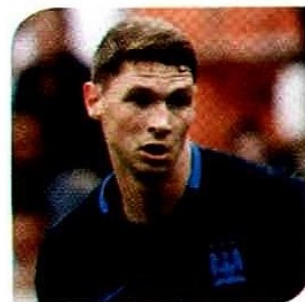
O'Connor lifted the FA Youth Cup during his days as a scholar at Aston Villa before he signed professional forms at Villa Park. His career has since taken him to AFC Bournemouth, Doncaster Rovers and Derby County before he joined the Saddlers in June of 2014.

JAMES BAXENDALE

A product of the Leeds United youth system, Baxendale spent a season with hometown team, Doncaster Rovers before moving to the Banks's Stadium in the summer of 2012. He made 37 appearances for the Saddlers in all competitions last term.

**MATT PRESTON**

Preston is a former skipper of the youth team at the Banks's Stadium. Handed a professional deal with the Saddlers in 2012/13, he finished the season with an Apprentice of the Year award. Sadly for the defender, injury has halted his progress and he had to wait until February of this year to make his first appearance against Rochdale. Made his first start of the season in a 2-0 reverse at Morecambe in September.

**GEORGE EVANS**

Currently on loan at the Banks's Stadium from Manchester City, the youngster made his first City start at the beginning of this term in a Capital One Cup win at Sunderland. Evans has enjoyed productive loan spells away from the Etihad Stadium at Crewe Alexandra and Scunthorpe United. Since joining the Saddlers on a temporary basis, he scored three times in his opening four games for the club including one on his debut in a 2-0 win at Bamsley.

TOM BRADSHAW

DANGER MAN

One of League 1's hottest goalscoring properties at the moment, R&W takes a closer look at one of the Saddlers' dangermen this evening.

Bradshaw first burst onto the scene as a teenager scoring goals in the Welsh Premier League outfit, Aberystwyth Town. After attracting plenty of attention from elsewhere, it was hometown club, Shrewsbury Town who won the race for his signature. The striker would go on to build a reputation for himself at both youth team and reserve team level for the Shrews before making his senior debut for the club in April 2010. He enjoyed the perfect start scoring with virtually his first touch then adding a second goal later in the game. Bradshaw would go on to make over 100 appearances at the Greenhous Meadow before penning a two-year deal with Walsall in the summer of 2014. Last season, the striker managed to bag 20 goals in all competitions despite missing some 20 matches through injury. Having signed a contract extension in June, he hit the ground running this term netting five goals in his first five games including a hat-trick in a 4-3 win at Nottingham Forest in the Capital One Cup. Capped by Wales and Under-19 and Under-21 level, Bradshaw received his first call-up to the senior Wales squad during the last round of international fixtures.

**ANTHONY FORDE**

Irishman, Forde graduated from the youth team ranks into the first team at Wolverhampton Wanderers and would spend three years at Molineux. He also spent time on loan at Scunthorpe in 2013 before moving down the M5 to join Walsall in the summer of 2014.

REECE FLANAGAN

Flanagan is a product of the youth system at the Banks's Stadium. The midfielder was a key member of the Saddlers' youth team before he was handed a professional deal. Broke into the first team last term and has featured regularly for Dean Smith's men this season.

LIAM KINSELLA

Another graduate of the youth system at Walsall, Kinsella was awarded his first professional contract at the end of the 2013/14 season shortly after winning the club's Apprentice of the Season award. The midfielder has also earned international honours with the Eire Under-19 side.

JORDAN COOK

Cook is in his second spell at the Banks's Stadium after a previous loan spell during the 2010/11 season. The striker then played for Carlisle United on loan before joining Charlton Athletic in 2012. After two years at the Valley, he re-joined the Saddlers in 2014.



New Generation i20 Premium SE 1.2

0% APR
Representative

£99 per month

£6,279 deposit

£6,885 optional final payment

and admiring glances wherever you go. We make it possible.

Pebbley Beach Hyundai 01793 816800

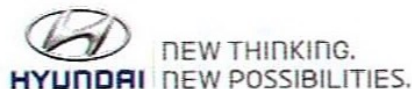
West Swindon Motor Park, Paddington Drive, Bridgemoor, Swindon SN5 7SB www.pebbleybeachhyundai.co.uk

Pebbley Beach Ltd, trading as Pebbley Beach Hyundai



The recent winner of a prestigious Red Dot award for design excellence, the stylish i20 Premium SE is impressive inside and out. The well-equipped, spacious interior offers outstanding legroom, whilst the opening panoramic sunroof and front and rear parking sensors make driving a joy. All made possible for just £99 per month. For more information visit our website or pop into our showroom.

Personal Contract Purchase, 25 month term, 10,000 miles p.a. Minimum 30% deposit required.



Fuel consumption in MPG (l/100km) for New Generation i20 range: Urban 30.7 (9.2) - 80.7 (3.5), Extra Urban 53.3 (5.3) - 94.2 (3.0), Combined 42.2 (6.7) - 88.3 (3.2), CO₂ Emissions 155-84g/km. These official EU test figures are to be used as a guide for comparative purposes and may not reflect all driving results.

YOU WILL NOT OWN THE VEHICLE UNTIL ALL PAYMENTS ARE MADE. FOR THE PURPOSES OF THIS FINANCIAL PROMOTION, WE ARE A CREDIT BROKER (NOT A LENDER). WE CAN INTRODUCE YOU TO A LIMITED NUMBER OF CAREFULLY SELECTED FINANCE PROVIDERS. WE MAY RECEIVE A COMMISSION FROM THEM FOR THE INTRODUCTION. Offer available on Hyundai i20 between 1st July and 30th September 2015 inclusive over 25 month term. At the end of the agreement there are 3 options: (i) Renew. Part exchange the vehicle, (ii) Retain. Pay the Optional Final Payment to own the vehicle or (iii) Return the vehicle. Further charges may be made subject to mileage and condition of the vehicle. Excess mileage charge 14.9p per mile. Finance subject to status. T&Cs apply. 18s and over. Guaranteed/Indemnity may be required. Hyundai Motor Finance RH1 1SR. Model shown: i20 Premium SE 1.2 at £15,540 OTR including Sleek Silver metallic paint at £515. Offer not available for customers under the Hyundai Affinity Programme. 5 Year Unlimited Mileage Warranty terms and exclusions apply. Visit www.hyundai.co.uk/owning or ask your local dealer.

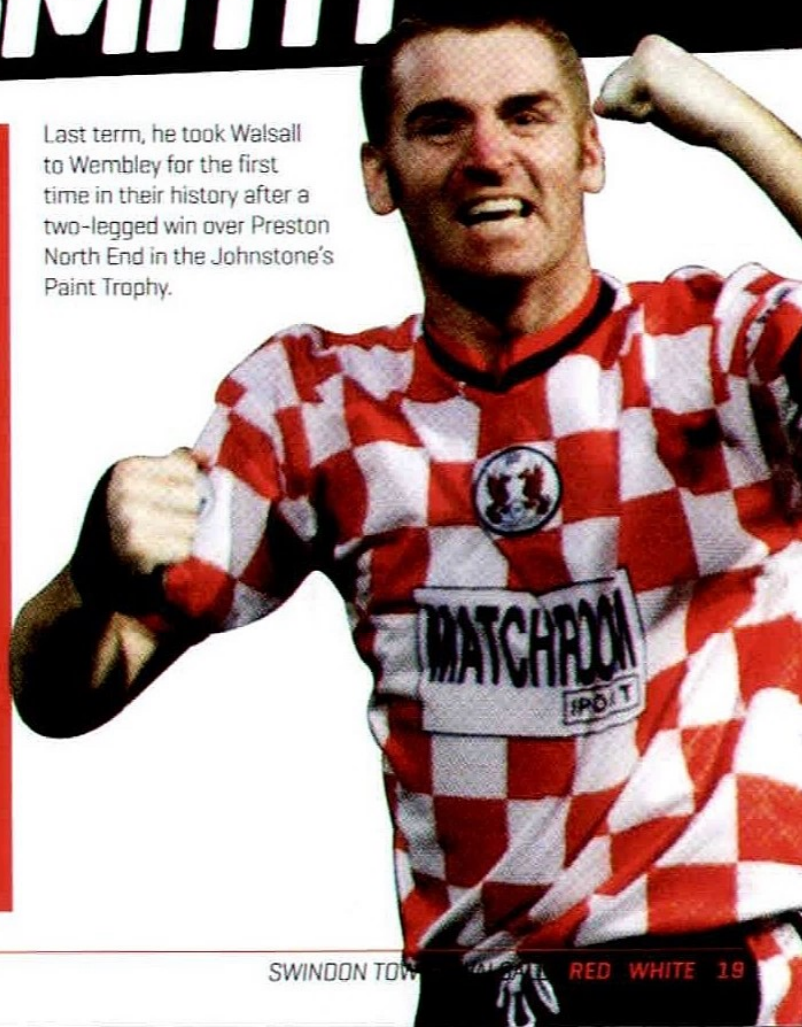
THE GAFFER

DEAN SMITH

Smith started his playing career at the Banks's Stadium, spending five years with the club between 1989 and 1994. He also became one of the youngest ever players to captain the club. He went on to play for the likes of Hereford United, Leyton Orient, Sheffield Wednesday and Port Vale during his fifteen-year career as a centre-half. After retiring, he moved into coaching where he was assistant at Leyton Orient to current Town boss, Martin Ling before moving to Walsall in 2009. Smith was head of Youth for the Saddlers before taking temporary charge of first team affairs. After being given the job on a permanent basis in January 2011, he guided the Saddlers to League 1 safety that season.

"After being given the job on a permanent basis in January 2011, he guided the Saddlers to League 1 safety that season. Last term, he took Walsall to Wembley for the first time in their history..."

Last term, he took Walsall to Wembley for the first time in their history after a two-legged win over Preston North End in the Johnstone's Paint Trophy.



DAVID M. COE

FINANCIAL PLANNING LTD



Proud Sponsors of Swindon Town Football Club

Established in 2003, we are a family practice based in Swindon. Collectively we have over 100 years industry experience and look to develop long term personal client relationships specialising in:

- Investment Planning
- Mortgage Advice
- Pensions/Retirement Planning
- Protection
- Trustee Investment Planning
- Inheritance Tax Planning

For further details please contact us on:

Tel: 01793 531351

Your home may be repossessed if you do not keep up repayments on your mortgage.

Email: David.Coe@sjpp.co.uk

Website: www.davidmcoe.co.uk

WALSALL

ROCHDALE

GILLINGHAM

SOUTHEND UNITED



Walsall 2-0 Fleetwood
FA Cup Round 1
Sat 7th November
Banks's Stadium
Attendance: 2,532

Rico Henry - aged just 17, the academy graduate was called up to England's Under-19 squad during the recent international break.

George Evans - watch out for the on-loan youngster who scored three in the first four games of his loan stint.



Scouting Report

The Saddlers could line up in a 4-1-4-1 formation this evening which can quickly shift to a 4-3-3 in attack. Tom Bradshaw is undoubtedly the focal point up front and is a big threat. Usually, Dean Smith will deploy two quick wingers either side of him - Milan Lalkovic likely to be one of them. The central midfield trio are likely to be George Evans (on loan from Manchester City), Adam Chambers and Romaine Sawyers. Sawyers is the most attacking of the three and will be a big threat for Town this evening. Defensively, Town will look to capitalise on the central defensive pairing. The Saddlers' fullbacks are both aggressive and push high up the pitch. Walsall had no game last week after no fewer than five of their players were called up for international duty.

PROGRAMME VAULT

Needing a point to secure promotion back to League 1, Town welcome table-topping Walsall to the County Ground on the final day of the season in front of a packed house. Jerel Ifil's diving header gave Town the lead before Dean Keates' last-minute wonder goal meant that both sides celebrated promotion.

CLUB HISTORY

1974-1975

1975-1976

1976-1977

1977-1978

1978-1979

1979-1980

1980-1981

1981-1982

1982-1983

1983-1984

1984-1985

1985-1986

1986-1987

1987-1988

1988-1989

1989-1990

1990-1991

1991-1992

1992-1993

1993-1994

1994-1995

1995-1996

1996-1997

1997-1998

1998-1999

1999-2000

2000-2001

2001-2002

2002-2003

2003-2004

2004-2005

2005-2006

2006-2007

2007-2008

2008-2009

2009-2010

2010-2011

2011-2012

2012-2013

2013-2014

2014-2015

2015-2016

2016-2017

2017-2018

2018-2019

2019-2020

2020-2021

2021-2022

2022-2023

2023-2024

2024-2025

2025-2026

2026-2027

2027-2028

2028-2029

2029-2030

2030-2031

2031-2032

2032-2033

2033-2034

2034-2035

2035-2036

2036-2037

2037-2038

2038-2039

2039-2040

2040-2041

2041-2042

2042-2043

2043-2044

2044-2045

2045-2046

2046-2047

2047-2048

2048-2049

2049-2050

2050-2051

2051-2052

2052-2053

2053-2054

2054-2055

2055-2056

2056-2057

2057-2058

2058-2059

2059-2060

2060-2061

2061-2062

2062-2063

2063-2064

2064-2065

2065-2066

2066-2067

2067-2068

2068-2069

2069-2070

2070-2071

2071-2072

2072-2073

2073-2074

2074-2075

2075-2076

2076-2077

2077-2078

2078-2079

2079-2080

2080-2081

2081-2082

2082-2083

2083-2084

2084-2085

2085-2086

2086-2087

2087-2088

2088-2089

2089-2090

2090-2091

2091-2092

2092-2093

2093-2094

2094-2095

2095-2096

2096-2097

2097-2098

2098-2099

2099-2100

2100-2101

2101-2102

2102-2103

2103-2104

2104-2105

2105-2106

2106-2107

2107-2108

2108-2109

2109-2110

2110-2111

2111-2112

2112-2113

2113-2114

2114-2115

2115-2116

2116-2117

2117-2118

2118-2119

2119-2120

2120-2121

2121-2122

2122-2123

2123-2124

2124-2125

2125-2126

2126-2127

2127-2128

2128-2129

2129-2130

2130-2131

2131-2132

2132-2133

2133-2134

2134-2135

2135-2136

2136-2137

2137-2138

2138-2139

2139-2140

2140-2141

2141-2142

2142-2143

2143-2144

2144-2145

2145-2146

2146-2147

2147-2148

2148-2149

2149-2150

2150-2151

2151-2152

2152-2153

2153-2154

2154-2155

2155-2156

2156-2157

2157-2158

2158-2159

2159-2160

2160-2161

2161-2162

2162-2163

2163-2164

2164-2165

2165-2166

2166-2167

2167-2168

2168-2169

2169-2170

2170-2171

2171-2172

2172-2173

2173-2174

2174-2175

2175-2176

2176-2177

2177-2178

2178-2179

2179-2180

2180-2181

2181-2182

2182-2183

2183-2184

2184-2185

2185-2186

2186-2187

2187-2188

2188-2189

2189-2190

2190-2191

2191-2192

2192-2193

2193-2194

2194-2195

2195-2196

2196-2197

2197-2198

2198-2199

2199-2200

2200-2201

2201-2202

2202-2203

2203-2204

2204-2205

2205-2206

2206-2207

2207-2208

2208-2209

2209-2210

2210-2211

2211-2212

2212-2213

2213-2214

2214-2215

2215-2216

2216-2217

2217-2218

2218-2219

2219-2220

2220-2221

2221-2222

2222-2223

2223-2224

2224-2225

2225-2226

2226-2227

2227-2228

2228-2229

2229-2230

2230-2231

2231-2232

2232-2233

2233-2234

2234-2235

2235-2236

2236-2237

2237-2238

2238-2239

2239-2240

2240-2241

2241-2242

2242-2243

2243-2244

2244-2245

2245-2246

2246-2247

2247-2248

2248-2249

2249-2250

2250-2251

2251-2252

2252-2253

2253-2254

2254-2255

2255-2256

2256-2257

2257-2258

2258-2259

2259-2260

2260-2261

2261-2262

2262-2263

2263-2264

2264-2265

2265-2266

2266-2267

2267-2268

2268-2269

2269-2270

2270-2271

2271-2272

2272-2273

2273-2274

2274-2275

2275-2276

2276-2277

2277-2278

2278-2279

2279-2280

2280-2281

2281-2282

2282-2283

2283-2284

2284-2285

2285-2286

2286-2287

2287-2288

2288-2289

2289-2290

2290-2291

2291-2292

2292-2293

2293-2294

2294-2295

2295-2296

2296-2297

2297-2298

2298-2299

2299-2300

2300-2301

2301-2302

2302-2303

2303-2304

2304-2305

2305-2306

2306-2307

2307-2308

2308-2309

2309-2310

2310-2311

2311-2312

2312-2313

2313-2314

2314-2315

2315-2316

2316-2317

2317-2318

2318-2319

2319-2320

2320-2321

2321-2322

2322-2323

2323-2324

2324-2325

2325-2326

2326-2327

2327-2328

2328-2329

2329-2330

2330-2331

2331-2332

2332-2333

2333-2334

2334-2335

2335-2336

2336-2337

2337-2338

2338-2339

2339-2340

2340-2341

2341-2342

2342-2343

2343-2344

2344-2345

2345-2346

2346-2347

2347-2348

2348-2349

2349-2350

2350-2351

2351-2352

2352-2353

2353-2354

2354-2355

2355-2356

2356-2357

2357-2358

2358-2359

2359-2360

2360-2361

2361-2362

2362-2363

2363-2364

2364-2365

2365-2366

2366-2367

2367-2368

2368-2369

2369-2370

2370-2371

2371-2372

2372-2373

2373-2374

2374-2375

2375-2376

2376-2377

2377-2378

2378-2379

2379-2380

2380-2381

2381-2382

2382-2383

2383-2384

2384-2385

2385-2386

2386-2387

2387-2388

2388-2389

2389-2390

2390-2391

2391-2392

2392-2393

2393-2394

2394-2395

2395-2396

2396-2397

2397-2398

2398-2399

2399-2400

2400-2401

2401-2402

2402-2403

2403-2404

2404-2405

2405-2406

2406-2407

2407-2408

2408-2409

2409-2410

2410-2411

2411-2412

2412-2413

2413-2414

2414-2415

2415-2416

2416-2417

2417-2418

2418-2419

2419-2420

2420-2421

2421-2422

2422-2423

2423-2424

2424-2425

2425-2426

2426-2427

2427-2428

2428-2429

2429-2430

2430-2431

2431-2432

2432-2433

2433-2434

2434-2435

2435-2436

2436-2437

2437-2438

2438-2439

2439-2440

2440-2441

2441-2442

2442-2443

2443-2444

2444-2445

2445-2446

2446-2447

2447-2448

2448-2449

2449-2450

2450-2451

2451-2452

2452-2453

2453-2454

2454-2455

2455-2456

2456-2457

2457-2458

2458-2459

2459-2460

2460-2461

2461-2462

2462-2463

2463-2464

2464-2465

2465-2466

2466-2467

2467-2468

2468-2469

2469-2470

2470-2471

2471-2472

2472-2473

2473-2474

2474-2475

2475-2476

2476-2477

2477-2478

2478-2479

2479-2480

2480-2481

2481-2482

2482-2483

2483-2484

2484-2485

2485-2486

2486-2487

2487-2488

2488-2489

2489-2490

2490-2491

2491-2492

2492-2493

2493-2494

2494-2495

2495-2496

2496-2497

2497-2498

2498-2499

2499-2500

2500-2501

2501-2502

2502-2503

2503-2504

2504-2505

2505-2506

2506-2507

2507-2508

2508-2509

2509-2510

2510-2511

2511-2512

2512-2513

2513-2514

2514-2515

2515-2516

2516-2517

2517-2518

2518-2519

2519-2520

2520-2521

2521-2522

2522-2523

2523-2524

2524-2525

2525-2526

2526-2527

2527-2528

2528-2529

2529-2530

2530-2531

2531-2532

2532-2533

2533-2534

2534-2535

2535-2536

2536-2537

2537-2538

2538-2539

2539-2540

2540-2541

2541-2542

2542-2543

2543-2544

2544-2545

2545-2546

2546-2547

2547-2548

2548-2549

2549-2550

2550-2551

2551-2552

2552-2553

2553-2554

2554-2555

2555-2556

2556-2557

2557-2558

2558-2559

2559-2560

2560-2561

2561-2562

2562-2563

2563-2564

2564-2565

2565-2566

2566-2567

2567-2568

2568-2569

2569-2570

2570-2571

2571-2572

2572-2573

2573-2574

2574-2575

2575-2576

2576-2577

2577-2578

2578-2579

2579-2580

2580-2581

2581-2582

2582-2583

2583-2584

2584-2585

2585-2586

2586-2587

2587-2588

2588-2589

2589-2590

2590-2591

2591-2592

2592-2593

2593-2594

2594-2595

2595-2596

2596-2597

2597-2598

2598-2599

2599-2600

2600-2601

2601-2602

2602-2603

2603-2604

2604-2605

2605-2606

2606-2607

2607-2608

2608-2609

2609-2610

2610-2611

2611-2612

2612-



COMMERCIAL UPDATE


allenford

Following on from a very good second half performance and a much-needed three points against Scunthorpe, we look for more of the same tonight as we look to get our season back on track.



These notes are being written before Saturday's game at Fleetwood so let's hope we have secured another three points against the Cod Army. It was great to see the atmosphere alive and kicking in the hospitality suites at our last home game against Scunthorpe. Thank you to those that supported us with sponsorships and various packages. The suites are selling very well for our next two up and coming home fixtures against Rochdale on 12th December and Gillingham on Boxing Day. We have very limited availability in the 1879 Sponsors Suite for both matches with other suites also starting to fill up. Please contact us as early as possible to watch the Town in style over the festive period. How about the New Year? All of the packages make for great Christmas presents. Please contact Rachel Burt on 0844 880 1094 for more information and to book your places.

There is still time to advertise with us this season. Get in touch to enquire about the last few remaining

groundboards and crowd-facing advertising spots. As we are part-way through the season, there are good deals to be had. Please call Kay Wainwright for more information on the number below. Kay will happily give you a tour of the ground to show you what spots are available. With 180,000 visitors coming through the turnstiles every season, the groundboards make for a great platform to promote your brand and/or business. Packages are affordable for small, local businesses so please do enquire. We also have only one page remaining in our matchday programme. This is a superb product which has a readership of 6,000. Once again, get in touch if you would like to explore this opportunity further.

We welcome on board 129 Field Company who are part of the British Army. They now feature in the programme and have taken a groundboard. This local Army Reserve Unit are now recruiting in the Swindon area. If this interests you, please contact

them on the numbers provided on their full-page advert. We have also just agreed a substantial advertising and sponsorship package with Avon Tyres. The majority of their inventory will launch in the New Year. A big thank you to Shane Wride and Avon Tyres for their commercial investment.

Onto tonight, we welcome SW Group Logistics as Match Sponsors, Haine & Smith as Matchball Sponsors who are offering £10 off an eye test or glasses for Town fans and finally, Morgan Stanley who are our Programme Sponsors. Enjoy your evening with us.

Don't forget to look out for and watch the next instalment of Shoot for the Boot, sponsored by Allen Ford West. The episode launches on the 1st December. Will Ellis landolo be knocked off top spot? Tune in to find out.

Come on you Reds.

Adam Wainwright
COMMERCIAL MANAGER

SPONSORS GALLERY vs SCUNTHORPE UNITED


www.thecountyground.co.uk

CONTACT THE COMMERCIAL TEAM:

Adam Wainwright: 0330 002 0020 / adam@swindontownfc.co.uk

Kay Wainwright: 0844 880 1086 / kay@swindontownfc.co.uk

Rachel Burt: 0844 880 1094 / rachel@swindontownfc.co.uk

MATCHDAY SPONSORS

**vs SCUNTHORPE UNITED**

Match: Dave Cobb Transport

Ball: RJ Osman Vehicle Service & Repairs

Prog: David M. Coe Financial Planning

**vs WALSALL**

Match: SW Group Logistics

Ball: Haine & Smith

Prog: Morgan Stanley

**vs ROCHDALE**

Match: STFC Supporters Club

Ball: Be Wiser Insurance

Prog: Riseam Sharples

**vs GILLINGHAM**

Match: Pre Pay Solutions

Ball: The Rugshack

Prog: Eclipse Labels

**vs SOUTHEND UNITED**

Match: Barnes Coaches

Ball: Available

Prog: Available

**vs CREWE ALEXANDRA**

Match: Pre Pay Solutions

Ball: Available

Prog: Available

**vs BARNLEY**

Match: Save On Tyres

Ball: Available

Prog: Royal Mail 419ers

**vs BLACKPOOL**

Match: Dave Williams Party

Ball: Available

Prog: Available

**vs DONCASTER**

Match: Available

Ball: Available

Prog: Available

**vs MILLWALL**

Match: Pre Pay Solutions

Ball: Lloyd Davenport Ltd

Prog: Available

**vs WIGAN ATHLETIC**

Match: The Verelogic Group

Ball: Available

Prog: Available

**vs FLEETWOOD TOWN**

Match: Rabbit Vehicle Hire

Ball: Available

Prog: Available

**vs BURY**

Match: Accountancy Services for Business

Ball: Available

Prog: Available

**vs CHESTERFIELD**

Match: Cotswold Farm Machinery

Ball: Available

Prog: SW Group Logistics

**vs SHREWSBURY**

Match: INTEL (FITC)

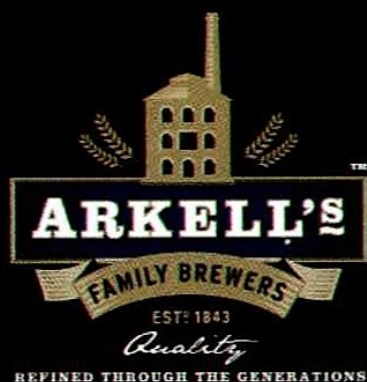
Ball: R&J Pearce Ltd

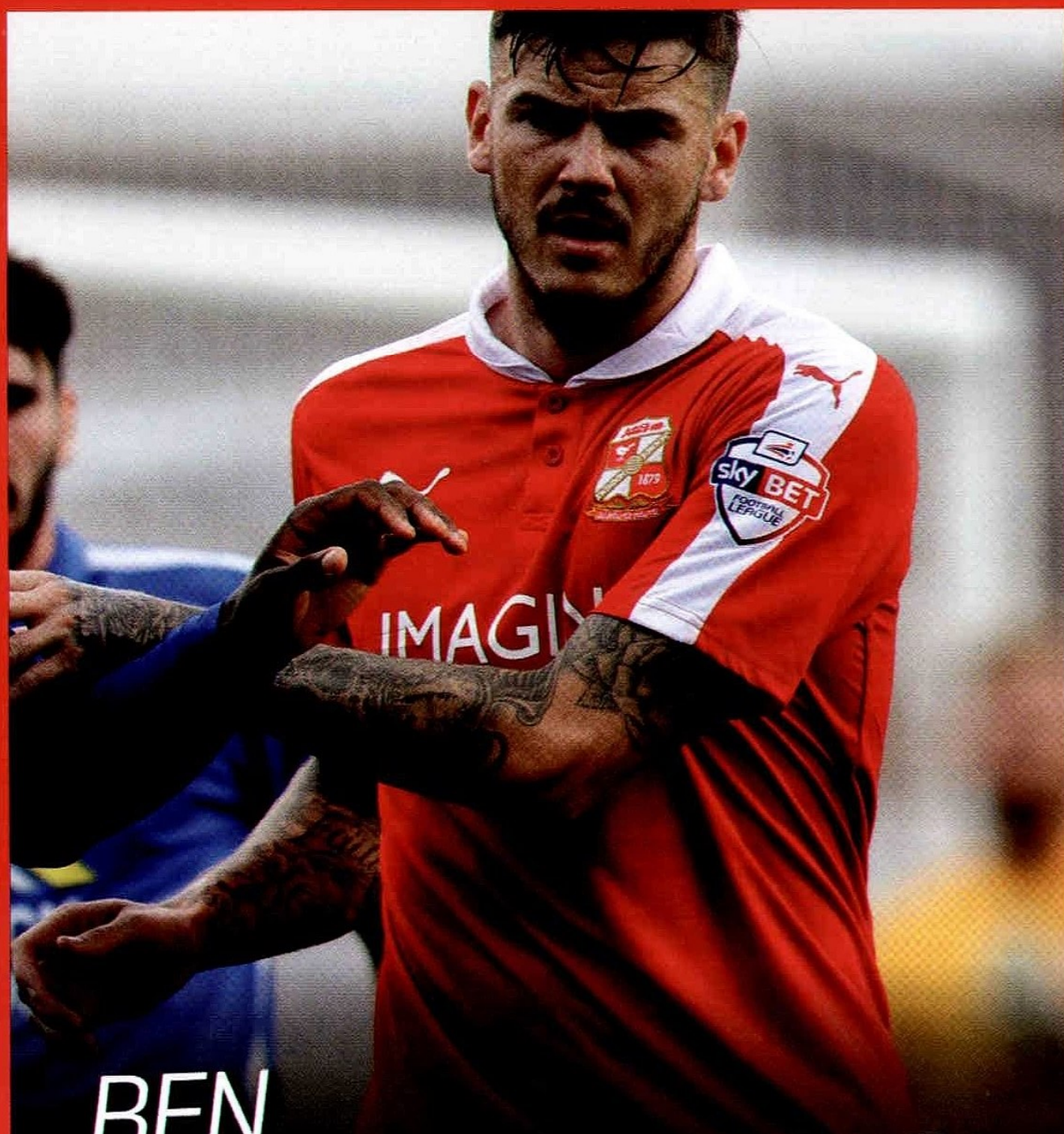
Prog: The Bowler Party

WWW.ARKELLS.COM

ARKELL'S AWARD WINNING BEERS

CRAFTED USING
ONLY THE FINEST
INGREDIENTS FOR
OUTSTANDING
FLAVOUR.





BEN GLADWIN

Back on familiar territory until the start of next month, the Queen's Park Rangers man reflects on what has recently been a period of change at Swindon Town...



How did you feel when you heard that you would be coming back here on loan?

I was excited to come back. I feel it was a club that helped me a lot and I knew everybody here but to come back and play football was the main thing for me.

How did you find the jump going from Town to QPR having not long been out of the non-league game?

I didn't find it too big. Obviously in training the tempo was a lot higher so that was something I had to get used to but I've enjoyed it there and I feel it's helped me a lot. Hopefully I can play games here, get myself back to QPR and into the first team.

What was it like walking in on your first day of pre-season to be mucking in with such an experienced group of players?

I got quite close to Charlie Austin and Matty Phillips. They were quite good to speak to if I was ever worried about anything

but you naturally learn off others just by watching players like that in training every day. It was a really good experience.

In your first game back here against Peterborough it was almost as if you'd never been away you settled in that quickly...

It was good to come straight in and hit the ground running. It was unfortunate about the result but on a personal note, it was a good performance. That's what I need to try and do now - just maintain the level of performance and do what I need to do to get myself back into the QPR team.

With Louis back on loan too it must feel just like old times in that midfield...

Yeah, really good. Louis, 'Yas' and Anton who I've got a great understanding with. It's always fun to play with your mates so I'm really enjoying my football at the moment.

After what happened last

"...I had to concentrate on helping the team as much as I could and get that first win. Now we've done that, hopefully we'll go on a little run..."

season it must have been strange to come into a team that was on a downward curve?

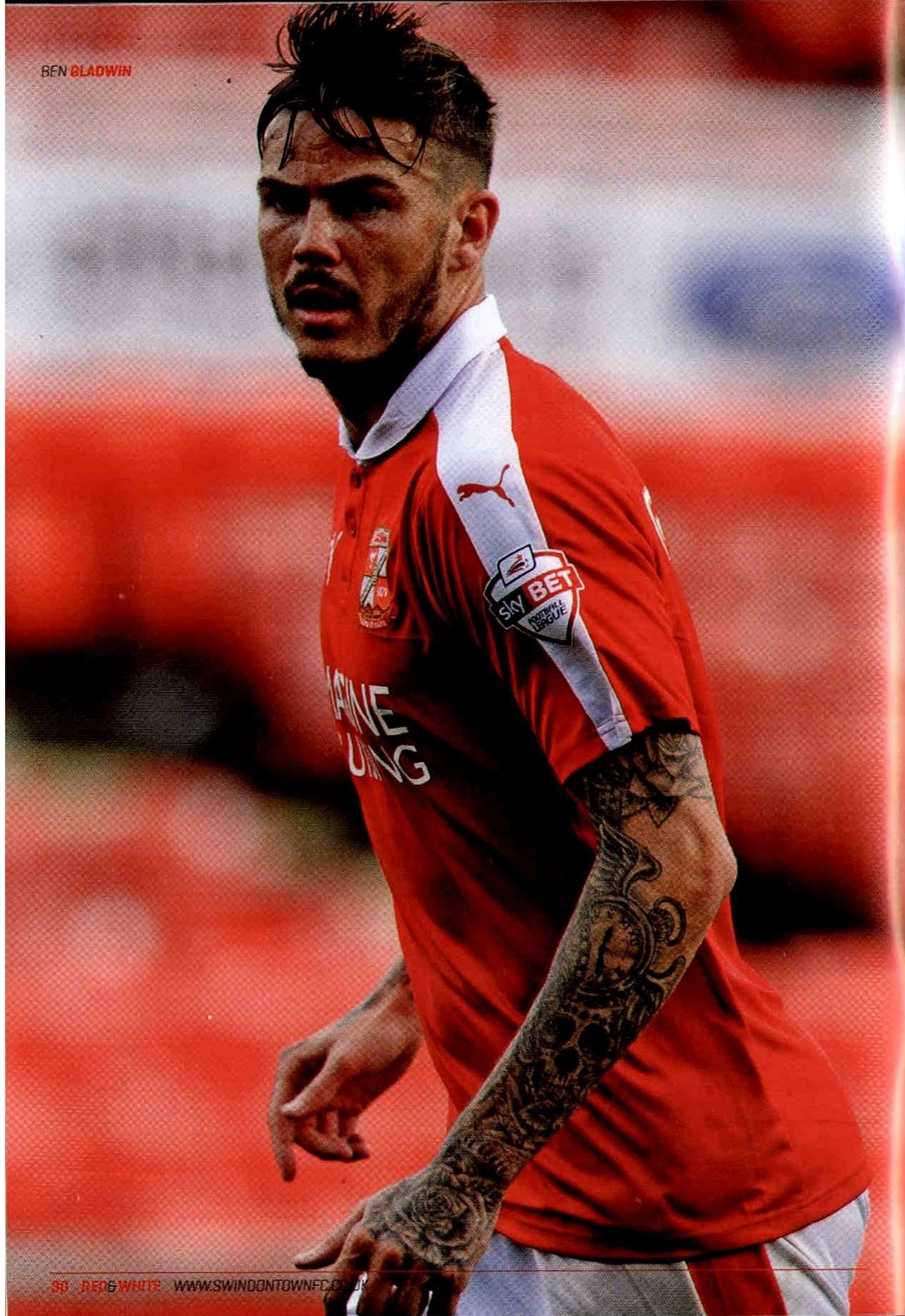
That was something that was quite strange. Away from football I struggle with that mentally a little bit but I had to concentrate on helping the team as much as I could and get that first win. Now we've done that, hopefully we'll go on a little run but it's just shown everybody around the club that we can do what we used to do and hopefully we'll keep doing it.

Well a new manager has come in along with a new addition to the coaching staff. What's the mood like around the place now?

The mood has been refreshed. Luke (Williams) does fantastic work and the manager has come in and freshened it up a little bit and has probably tightened up on a few things off the pitch like fines and things that have brought a bit of discipline in. I think that shows on the pitch now: we're together and working



BEN GLADWIN



really hard for each other so that's important.

Is there a sense now that you're back into your old way of playing?

The change in formation and going back to how we used to play has really helped us. A lot of players know that formation so it's good for the way we want to play.

What about you – are you enjoying this free role behind the strikers again?

It's always fun because you get in those little holes. I still think I can do a lot more and do more with the chances that I do get whether that be setting the boys up, trying to find Nicky or the other strikers or scoring myself. Every day that's still something I'm looking to improve on and hopefully, with more games and more sharpness, that will come.

And your role off the pitch? James Brophy is someone who has trodden a similar path to you in jumping from the non-league. Have you had a chance to speak to him about how he's settling in?

We have spoken in bits. It's funny because he said to me the other day that he could never go back to doing his old job – just as we were sat in a bath at one o'clock on a Tuesday afternoon! I think he's enjoying it and making the most of it. Credit to him, he comes in every day and works really hard. As long as that continues I'm sure he'll get himself further in the game.

If you had a message for any player in the non-leagues looking to follow in your footsteps,

“When you look back at the results over the last few weeks I think it's been coming. The Coventry game, I thought we were the better team and we got the result.”

what would you say to them?

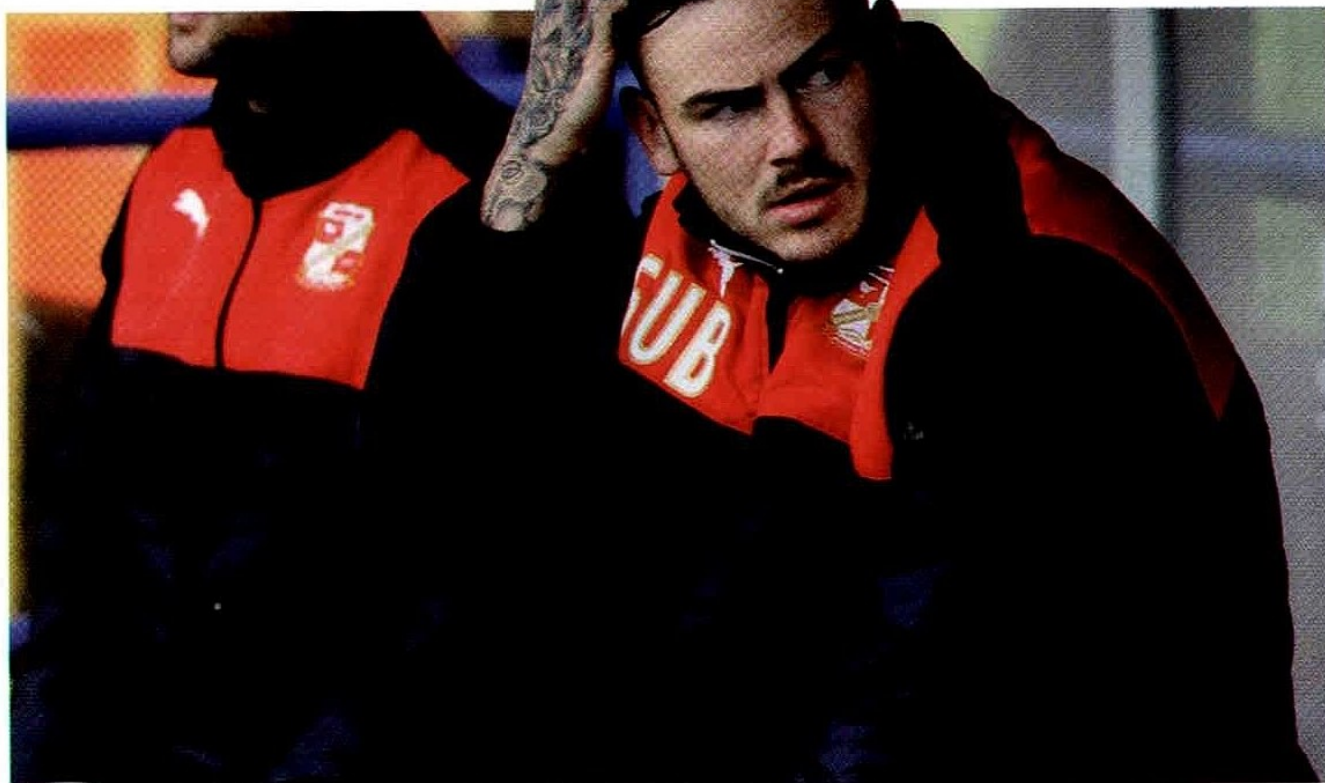
Just keep plugging away. It's never easy. I'll always say that I was quite lucky to get the opportunity in the first place but since I've been here, I've grabbed it with both hands so you've got to keep plugging away, working hard and, fingers crossed, the opportunity will come.

On the pitch, how important was that win against Scunthorpe last time out at the County Ground?

When you look back at the results over the last few weeks I think it's been coming. The Coventry game, I thought we were the better team and we got the result. Then at Wigan I thought we were in the game for most of it against a really good side – probably one of the best sides in the league – and we were unfortunate. I thought it was a good performance as well. We've always said as long as the performances are right, then the results will follow and that came on Saturday.

Walsall are flying high at the moment. They're going to be a difficult prospect this evening?

Walsall are a good side. We know that and we'll work on that but I don't think there will be any nerves going into it because we've shown we can do it against the likes of Coventry and Wigan and hopefully Walsall too.





- Programme design
 - Transaction processing
 - BIN sponsorship
 - Compliance and Risk management
 - Programme support
 - Supply chain management
-
- Open loop
 - Private label
 - Closed loop
 - Mobile wallet

Europe's leading prepaid provider

An alliance between **Edenred** and **MasterCard Worldwide**

www.prepaysolutions.com

PrePay Solutions is the trading name of PrePay Technologies Ltd, a company registered in England and Wales under Company Number 04008083 and whose registered office is 3 Sheldon Square, London, W2 6HY, United Kingdom. PrePay Technologies Ltd is authorised and regulated by the Financial Conduct Authority (FRN 900010).



ARMY RESERVE RECRUITING NOW IN SWINDON

**WE CAN TRAIN YOU FOR HUNDREDS OF ROLES,
RECRUITING NOW FOR PAID PART-TIME JOBS.**

To find out more about the opportunities available visit
your local Army Reserve Centre: 104 Battalion Royal
Electrical Mechanical Engineers, 129 Field Company,
Yeomanry House, Swindon SN1 5EH.

Email: 129fdcoy@gmail.com

Tel: **07557 014873** or **01793 588704**



Search Army Reserve



ARMY
BE THE BEST

MOVEMBER

GROW A MO
+ MOVE Every day of
NOVEMBER
for MEN'S HEALTH

MOVEMBER.COM
Sign Up 

↓ MOUSTACHE

PROSTATE CANCER UK IS A REGISTERED CHARITY IN ENGLAND AND WALES (1005541) AND IN SCOTLAND (SC039332). REGISTERED COMPANY NUMBER 2853987.



Sport a moustache for men's health this Movember.

Grow a Mo or Move to raise awareness and funds for men's health issues, specifically prostate cancer, testicular cancer, poor mental health and physical inactivity. Sign up at movember.com





EVOSPEED SL

MEET PUMA'S LIGHTEST MATCH BOOT EVER.



LIGHTWEIGHT

Ultra-thin textile upper reduces weight for enhanced speed



SUPPORT

Laser-cut SPEEDFRAME provides support during forward acceleration and quick turns



REACTIVITY

Raised SPEEDTRACK spines improve reactivity and torsional stability

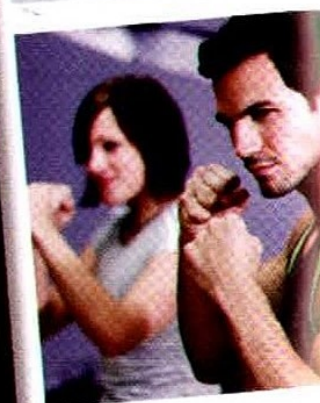


TRACTION

Mix of conical and bladed studs improves traction and acceleration



ENJOY A FREE DAY PASS AT DAVID LLOYD SWINDON*

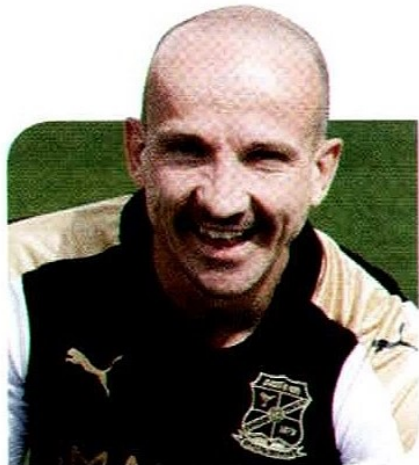


Call 0344 245 8095 or visit
www.davidlloyd.co.uk/swindon to register

LIFE. Be fit for it
DAVIDLLOYD.CO.UK/GUEST



Terms and conditions apply. Facilities, fees, classes and membership contracts vary by club. Certain activities may incur additional fees.
For full terms and conditions visit www.davidlloyd.co.uk/guest



PAUL GODFREY

It's been a long time coming but we are now through the worst of the 'injury crisis.'



As I've mentioned in my previous set of notes, a lot of the lads were side-lined due to a lot of trauma injuries which means a lot of those injuries were down to impact; in other words, teams trying to impart their physicality on the players. That doesn't last all season. We just had a very unlucky patch. Now they are all back and a few of them are still short of full match fitness but that will come in time with training. Essentially, the gaffer now has a full squad to choose from.

Nathan Thompson is the only injury at the moment. His groin is being taken nice and steady and he's progressing very well. He's been at St.

George's Park this week for a change of scenery and to take advantage of the Professional Footballers' Association-funded rehabilitation up there. We do that from time to time with some of the lads who are going to be out for a long period of time just to give them that change of scenery and perhaps a different opinion and a different input. The facilities there are second to none - smaller clubs like ours obviously don't have that sort of facility and it just breaks up the monotony of 'Groundhog Day' with some of these longer-term injuries. Nathan is doing very well at the moment and I would expect him back and fully fit around Christmas time.

"Liverpool have informed me that he's back in full training with them and they expect him to return to us sometime in the next week or two."

Kevin Stewart sustained a nasty medial ligament injury on 1st September. He's been out slightly longer than expected so he's coming up to the 12-week mark now. Liverpool have informed me that he's back in full training with them and they expect him to return to us sometime in the next week or two. Jordan Williams' knee is a bit more problematic - they've tried to put him back into loading and training and the knee keeps reacting so we don't have a return date for him yet. That's something that's going to take a bit longer.

Paul Godfrey
PHYSIOTHERAPIST

ACTION REPLAY

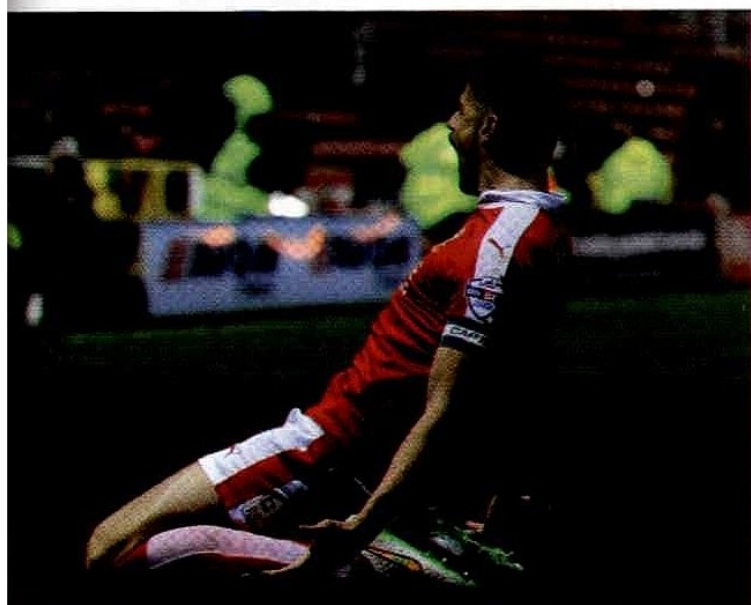


SWINDON TOWN SCUNTHORPE UNITED

Sky Bet League 1
Saturday 14th November 2015
The County Ground

2
1





YEARS OF TRANSFORMING GRASSROOTS FOOTBALL


www.footballfoundation.org.uk




Department
for Culture
Media & Sport

FUNDING PARTNERS

Football 
Foundation

 @FootballFoundtn

 flickr.com/footballfoundation

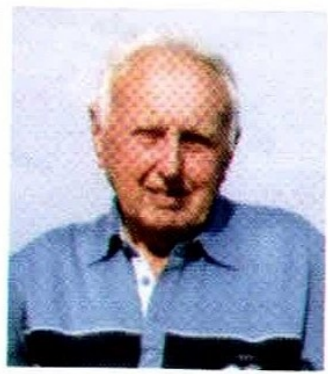
 Youtube.com/Footballfdn

 linkedIn.com/football-foundation



MESSAGE BOARD

Happy Birthday to John Boulter who celebrated his 84th birthday yesterday! John has been a Swindon Town supporter for 80 years. His father used to put him over the fence on to the path to watch the game. He became a Season Ticket Holder many years ago and went to many away matches. He's gone through all the ups and downs of the club, one of the highlights being beating Arsenal at Wembley.



FEATURE HERE!

If you'd like to feature on this page, please e-mail us at programme@swindontownfc.co.uk with your message and your face could be the next to appear!

GOODBYE AND GOOD LUCK

Tonight is the final home game for our very own Sian Griffiths who will be leaving the club after nearly two years of service at SN1. Always greeting every visitor to the County Ground reception with a cheery smile and a friendly face, we would all like to wish Sian the very best for the future. With love from all your friends at Swindon Town Football Club.





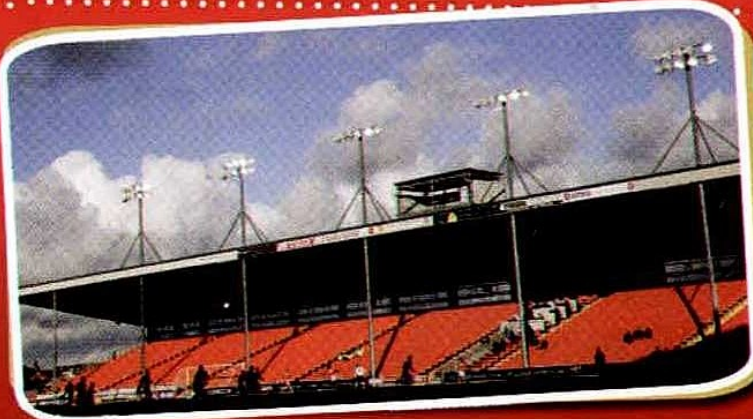
BRADLEY

BARRY

JUNIOR REDS



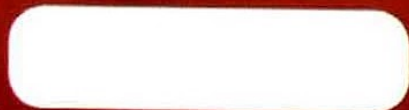
**CAN YOU SPOT
THE BALL?**



WHAT STADIUM IS THIS?



**NAME THE
MANAGER**



**NAME THE
FORMER ROBIN**



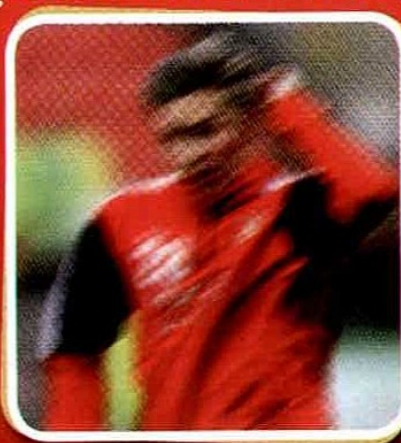
ROCKIN'S TOWNTALISER 15 ... NAME THIS TOWN MANAGER FROM THE 80s



0221E VBDJES



NAME THE CLUB'S BADGE



WHICH TOWN PLAYER IS THIS?



NAME THE CLUB'S SHIRT



NAME THE OPPOSITION PLAYER



ANSWERS:
Spot the Ball: C
The Manager: Graham Westley, Peterborough United
The Stadium: Bloomfield Road, Blackpool
The Former Robin: Eric Sabin
The Club's Badge: Shrewsbury Town
The Town Player: Ellis Landale
The Club's Shirt: Fleetwood Town
The Opposition Player: Milan Lukovic



/axisgroupuk



@axisMandE



Proud Sponsors of Swindon Town Football Club

AXIS GROUP BUILDING SERVICES

www.axisgroupuk.com

We are a multi-discipline building services contractor
with offices in Australia, New Zealand, Asia, USA and the UK.



C | F | M
COTSWOLD
FARM MACHINERY

NEW & USED STOCK • PARTS • SERVICING

**A leading Agricultural &
Horticultural machinery specialist**

New and used equipment available from Case IH,
JCB, Kuhn, Iseki, Simba Great Plains, Dalbo,
Bomford, AW Trailers, Suzuki, Mountfield and Stiga

01285 720606 • www.cotswoldfarm.co.uk

Fosse Cross Industrial Estate, Fosse Cross, Cheltenham, Gloucestershire GL54 4NW



STICKER COLLECTION



Welcome to our newest fan, Darcy Hart! Darcy is just eight weeks old and is already sporting Town colours!



A very Happy 3rd Birthday to Jenson Gough for the 26th November. With lots of love Daddy, Mummy, Lewis, Jake and Robbie X



Happy Birthday to Karen Ainscow who celebrates her birthday today! Have a lovely day from all your friends at Swindon Town.



Happy Birthday to our very own Operations and Retail Manager, Karen Randall who celebrates getting halfway to fifty at the weekend! From all your friends at Swindon Town.



Happy Birthday to Debbie Carney who celebrates her birthday this week. We hope you have a wonderful day! From all your friends at Swindon Town.

**Be the next to join
the Robins sticker
collection!**

Simply e-mail your snaps to programme@swindontownfc.co.uk or send them to us via our social media accounts!



Nationwide. Proud to be supporting



nationwide.co.uk



On your side



SUPPORTERS CLUB



50/50 DRAW RESULTS V SCUNTHORPE

1st ticket - number 480 wins £450 - A. Fry of Swindon

2nd ticket - number 1033 wins £50 - J. McIlherron of Swindon

We will be sponsoring our second game of the season against Rochdale and the following members have been drawn to attend: K. Garnham, B. Holloway, D. Bedford, R. Bunce, S. Shuter, J. Morse, B. Whittle, J. Lines, M. Clutterham, H. Wood.

I am delighted to say that we will be helping to fund the Seniors' Christmas Lunch once again. If anyone would like to attend please contact Karen Randall at the football club. This is a special occasion enjoyed by all and it will be held on Thursday 10th December in the Legends Lounge from 12noon.

I have visited today's visitors, Walsall on many occasions but the game [or non-game] which I remember most is arriving at Walsall at about 6pm as the snow came down only for the ref to postpone the game. As I was walking back to my car a member of the Walsall staff gave me a box of pies as they could not use them. I took them into my office at work meaning the whole building smelt like an Indian restaurant!

It is many years since I stood in the Town End but what great support they have given the team in the last two home matches especially against Coventry. Let's hope for a few wins in the forthcoming matches to move up the table.

Roger Bunce
SUPPORTERS CLUB CHAIRMAN

CONTACT US

SUPPORTERS CLUB CHAIRMAN

Telephone: 01865 820499

Mobile: 07914 076665

Email: chairman@swindontownsupportersclub.com

PRESS & MEDIA

Mobile: 07891 422905

Email: enquiries@swindontownsupportersclub.com

MEMBERSHIP

Email: membership@supportersclub.com

POUNDS FOR POINTS

Email: mavis@swindontownsupportersclub.com

AWAY TRAVEL

Telephone: 01793 536757

Email: sastravel.c@sky.com

POUNDS FOR POINTS

Peter Scull	£4.00
Mike McQueen	£3.00
Andy Whitaker	£3.00
Simon Bayliss	£2.00
David Johnson	£2.00
Olive & Michael Spearman	£1.00
Miss Joan Griffiths	£1.00
David Toddington	£1.00
Toni Cox	£1.00
Jerry Walsh	£1.00
Mike Dew	£1.00
Paul Bartlett	£1.00
Wendy & Jim Murray	£1.00
Honor Fraser	£1.00
Kim Young	£1.00
The Fox Inn, Denchworth	£1.00
Rod & Hilda Sheppard	£1.00
Ian Pert & Sue Grainger	£1.00
Paul Plowman	£1.00
Chris & Eileen Bailey	£1.00
Len Clutterham	£1.00
Keith Smith	£1.00
Andrew Wisbey	£1.00
Russell & Jenni Osman	£1.00
K & K Training	£1.00
Lucy Fisher	£1.00
Chris Tanner	£1.00
Mike Castle	£0.50
Shirley May Hollister	£0.50
Pete Toddington	£0.50
Bradley Carter	£0.50
Dennise Webb	£0.50
Fred Nash	£0.50
Ken Bunce	£0.50
L J & C A Cannings	£0.50
Anna Tomkins	£0.50
Colin Cherrill	£0.50
Frank Bunce	£0.50
George & William Woodley	£0.50
Maisie Olivia Davison	£0.50
Jean Nicholls	£0.50
Miss J Green	£0.50
Ann Alder	£0.50
Mark J Hayes Building & Property Maintenance	£0.50
Miguel Gouveia	£0.50

TOTAL:
£708.00



Drainage & Property Maintenance

07775 710 047 | 07720 237 086 | 01793 324 040
newjax@outlook.com | www.newjax.co.uk

**FOR ALL OF YOUR
EQUIPMENT NEEDS CALL...**

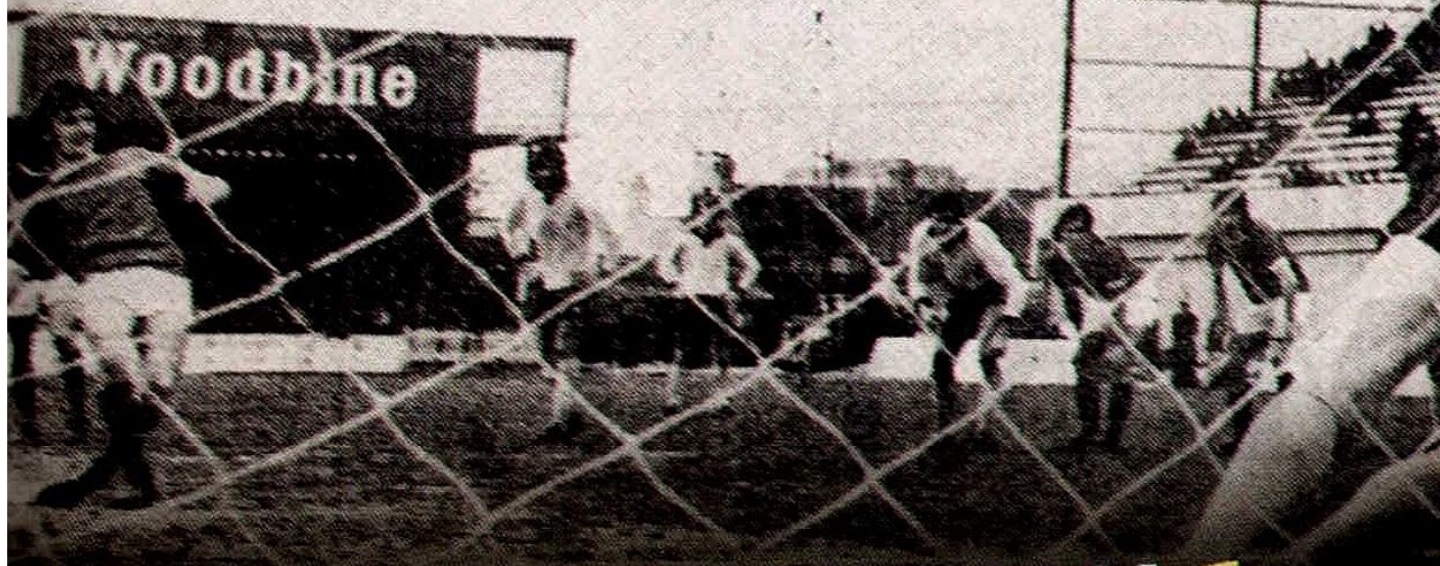
- DIY
- FIXINGS
- PLANT HIRE
- EXCAVATORS
- LADDERS & STEPS
- GENERATORS
- TOOL HIRE



**FAST
PLANT
SWINDON LTD**

- SMALL TOOL HIRE
- LIFTING & MOVING
- ALLOY TOWER
- POWER TOOLS
- ACCESSORIES
- HARDWARE
- POWERED ACCESS

For a full list of items to hire call today on
01793 617854 • www.fastplant.co.uk
Dunbeath Road, Elgin Industrial Estate, Swindon.



SWINDON 5 WALSALL 1

Division 3, 24 April 1976

"Referee Lester Shapter, a Paignton police officer, gave no fewer than four penalties - three of them in the space of seven minutes!"

Two goals in as many minutes a quarter of an hour from the end would have been enough to send the Saddlers home empty handed. But the events of an extraordinary first 53 minutes made Town's margin of victory much greater.

Referee Lester Shapter, a Paignton police officer, gave no fewer than four penalties - three of them in the space of seven minutes!

Winger Trevor Anderson converted all three awarded to Swindon, thus securing his first career hat-trick.

The first spot kick went in the visitors' favour, when John Trollope was adjudged to have impeded Alan Buckley. The little number ten calmly got up to slot home his 35th goal of the season.

Anderson notched his first just two minutes later, when Mr Shapter took exception to a challenge on Dave Syrett by Roger Hynd.

The second came after a further five minutes, when Dave Moss took a tumble. The Irishman

despatched the ball into the bottom right corner - the opposite one to where his first had been placed.

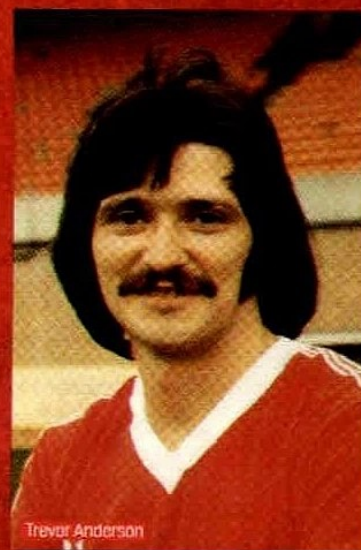
His hat-trick could have come just before the break, when he met a Trollope centre, but the ball flew high over the crossbar. His wait was over, however, less than ten minutes from the restart.

Teenage defender Kelvin Clarke - making only his second start for Walsall - handled a cross and this time Anderson fired the ball high past 'keeper Mick Kearns.

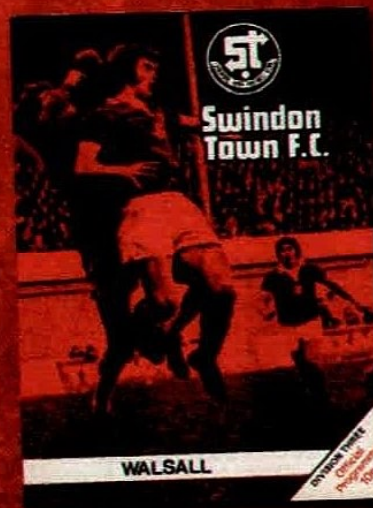
Moss took over on 75 minutes, gathering Gerry O'Brien's astute pass before netting with a low left-foot shot. And in Town's next attack he turned provider, supplying Syrett.

The former youth striker shrugged off the attention of Hynd before beating the 'keeper from close in.

The win not only boosted Swindon's goal average but it went closer to safeguarding their place in the Third Division for 1976/77 - after they had sat at the bottom of the table just a month earlier.



Trevor Anderson





PLAYER SPONSORS

LAWRENCE VIGOUROUX

Paul Hedges

01

NATHAN THOMPSON

TES Group

02

BRANDON ORMONDE-OTTEWILL

STFC Disabled Group

03

FABRIEN ROBERT

THERAPY PLUS

04

JORDAN WILLIAMS

TRAVEL

05

JORDAN TURNBULL

L&M

Lee Sharland & Matt Brayshaw

06

DRISSA TRAORÉ

TRAVEL

07

YASER KASIM

THETOWNEND.COM

08

NICKY AJOSE

The S.T.C. SUPPORTERS CLUB

10

KEVIN STEWART

Swindon Town FC Academy

11

MOMAR BANGOURA

SPONSOR FOR £650 inc VAT

12

WES THOMAS

DEACONS for DIAMONDS

14

JAMES BROPHY

WINGATE BUILDING SERVICES

15

JORDAN STEWART

SUPPORTERS TRUST

16

LOUIS THOMPSON

LONDON REDS

18

JEREMY BALMY

SPONSOR FOR £650 inc VAT

19

JONATHAN OBIKA

DAVID M. COE FINANCIAL PLANNING LTD

20

WILL RANDALL

www.emmooncatphotos.com

21

*If you would like to become a player sponsor
then please call us on 0844 880 1094*

LEE MARSHALL

**SPONSOR FOR
£650 inc VAT**

JOSH COOKE

**MARTYN BOWDEN
FAMILY**

JERMAINE HYLTON

**Beesleys
TOOLS
Tool-Shop.co.uk**

TYRELL BELFORD

Bob Haydon & Damian McClure
Proud sponsors of Ty Belford

DT
Demo's Taxis
01993 703322

ANTON RODGERS

MITCHELLS CYCLES

BRADLEY BARRY

TRAVEL

ELLIS IANDOLO

**SPONSOR FOR
£650 inc VAT**

RAPHAEL ROSSI-BRANCO

**DAVID M. COE
FINANCIAL PLANNING LTD**

HENRIK OJAMAA

Catalent

MARTIN LING

ttc | the transportation consultancy

LUKE WILLIAMS

Monahans
Chartered Accountants & Business Advisers

ROSS EMBLETON

**SPONSOR FOR
£350 inc VAT**

STEVE HALE

UPPER CRUST

PAUL GODFREY

**SPONSOR FOR
£350 inc VAT**

MICHAEL COOPER

Dixon's Piano Services

MARK WEBB

**SPONSOR FOR
£350 inc VAT**

ALEX SEAGER

**SPONSOR FOR
£350 inc VAT**

ROCKIN' ROBIN

**SPONSOR FOR
£350 inc VAT**

CHECK YOUR ELIGIBILITY WITH **QUICKCHECK**

QuickCheck shows whether you could be accepted for one of our cards before you apply.

- ✓ Find out which card you could be accepted for
- ✓ Won't impact your credit score
- ✓ Just 3 easy steps



Try QuickCheck now at

CAPITALONE.CO.UK/QUICKCHECK





SWINDON TOWN

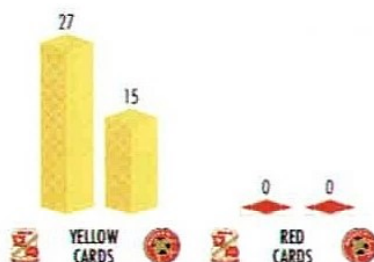
v

WALSALL



MATCH FACTS

Swindon have lost only one of their last 11 meetings with Walsall (W4 D6).



MATCH FACTS

The Saddlers are unbeaten in five away meetings with Swindon, though four have been draws (W1).



GOALS



AV. GOALS PER GAME



SHOTS (EX. BLOCKED)



% SHOTS ON TARGET



CLEAN SHEETS



% GOALS TO SHOTS



CORNER KICKS



GOALS CONCEDED

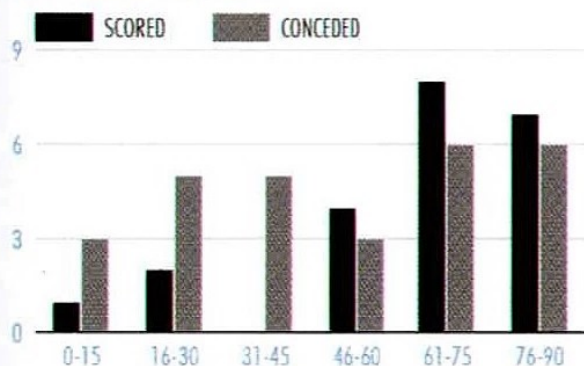


AV. GOALS CONCEDED PER GAME



FOULS

GOAL TIMES



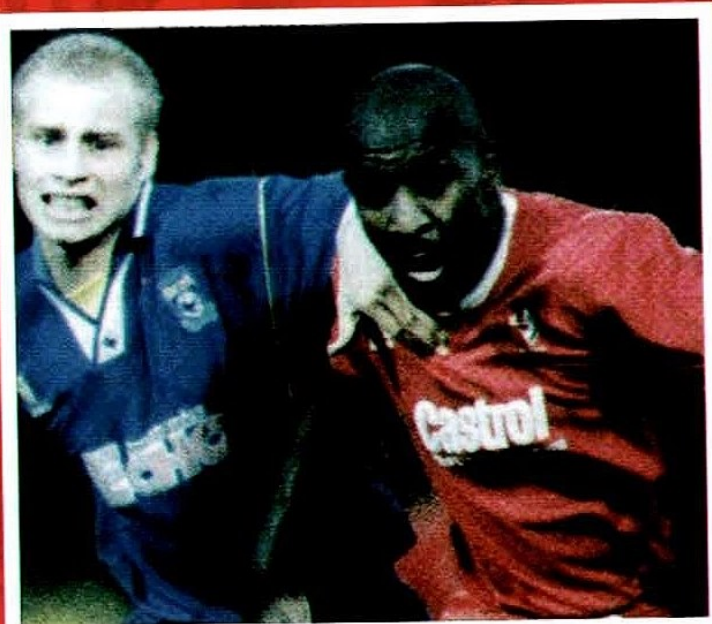
GOAL TIMES



*Data doesn't include games played on Nov 20-22



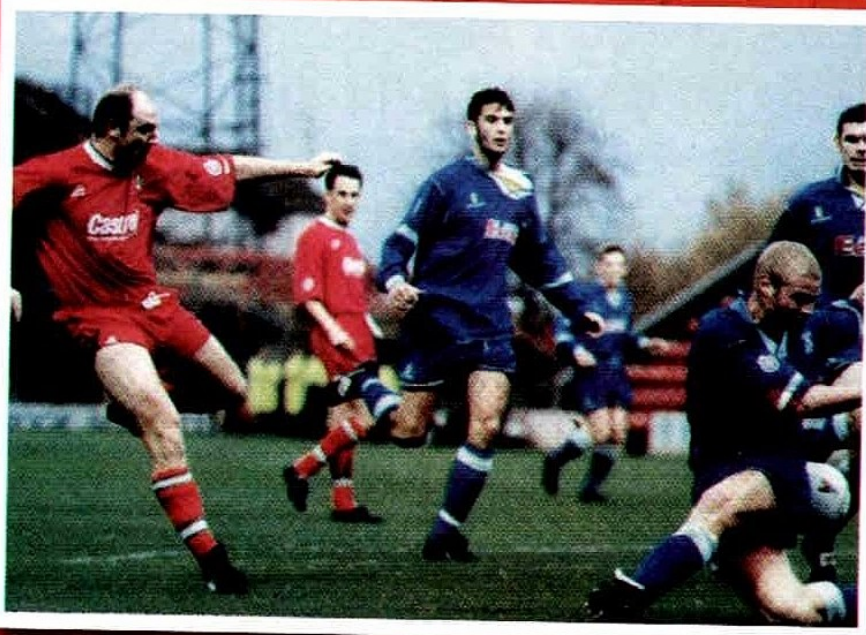
WE ARE THE CHAMPIONS



**"THE BIG STRIKER
WEAVED HIS
WAY TOWARDS
THE RETREATING
BLUEBIRDS' BACKLINE
BEFORE UNLEASHING
A THUNDERBOLT THAT
CRASHED IN OFF THE
UNDERSIDE OF THE
CROSSBAR."**

The month began with the visit of Cardiff City in the second round of the FA Cup. After a goalless first hour, Wayne Allison opened the scoring for the home side. The big striker weaved his way towards the retreating Bluebirds' backline before unleashing a thunderbolt that crashed in off the underside of the crossbar. With seven minutes to play, Steve McMahon's neat through ball found Steve Finney in the box who gave himself time and space to drill in left-footed across the goalkeeper to seal a 2-0 win.

A week later, Swindon were back in league action, hoping to extend their advantage at the top of the Second Division following a difficult spell of results. On a difficult afternoon at Millmoor, Finney broke the deadlock with twenty minutes to go. Kevin Horlock's corner had Millers' keeper, Carl



1995/96

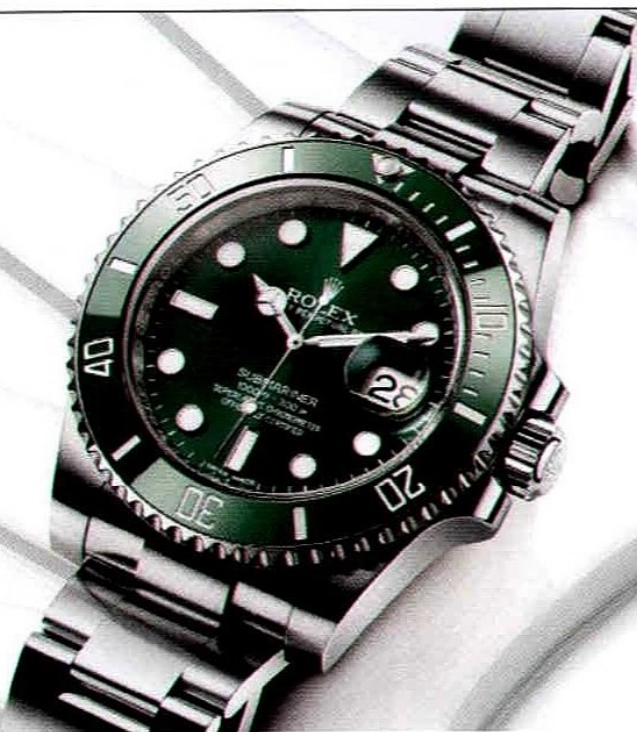
AS THE CAMPAIGN ENTERED DECEMBER, TOWN WERE DETERMINED TO MAKE IT A FESTIVE SEASON TO REMEMBER...



Muggleton flapping at the ball in the air. Finney made a nuisance of himself as the goalkeeper let gravity take its natural course and when the ball came loose, forced it over the line in uncompromising fashion. With "Walking in a Finney Wonderland" still ringing out from the away end, the frontman netted his fifteenth goal of the season to confirm a 2-0 away-day success for McMahon's men. Substitute, Ty Gooden's shot was spilled by Muggleton right into the path of the unmarked Finney who despatched a shot into the bottom corner.

Next up at the County Ground were Wrexham who had inflicted Town's first defeat of the season earlier in the campaign. "If I had a pound for every time someone has suggested to me that we have a score to settle with Wrexham I'd be laughing," McMahon wrote in his programme notes. "I don't see it that way. What has happened, has happened." Just as it was at the Racecourse Ground, Swindon took the lead. Paul Allen turned back the clock with a marauding run down the right channel. His driven ball in was met in the middle by Wayne O'Sullivan who glanced in the opening goal. In the 87th minute, Shaun Taylor was adjudged to have hauled down his man in the box much to the consternation of the home crowd. Karl Connolly stepped up and, despite a 'friendly' word in the ear from Steve McMahon, struck the ball into the corner, sending Digby the wrong way in the process and earning his side a point.

OYSTER PERPETUAL
SUBMARINER DATE



 **DEACONS**

11-15 Wood Street, Old Town, Swindon, Wiltshire SN1 4AN
www.deacons-jewellers.com

WATCH FEATURED SUBJECT TO STOCK AVAILABILITY


ROLEX

MorrisOwen

chartered accountants, business advisers and more...



Chartered accountants
Business advisers
Chartered tax advisers
Independent financial advisers



www.morrisowen.com

**Find out what makes Morris Owen
more than just accountants**


Contact Dave Bond on **01793 603900** or email
dave.bond@morrisowen.com

Registered to carry on audit work by the Institute of Chartered Accountants in England and Wales. Authorised and regulated by the Financial Conduct Authority.
Registered with the Chartered Institute of Taxation as a firm of chartered tax advisers.


first
city

Health and
Social Care
you can trust

 01793 434222

 enquiries@firstcitygroup.co.uk
www.firstcitynursing.co.uk



www.redarmyfund.co.uk

RED ARMY FUND
 help us to raise the roof!

KEEP IN TOUCH WITH THE SUPPORTERS TRUST: www.truststfc.com Trust STFC @truststfc


As our Red Army Fund flyer states, we're looking to "Raise the Roof" over the Stratton Bank, but that's our ultimate long-term objective and we need many more supporters to sign-up to our fundraising effort before that can become a reality.

Realistically we will need to secure additional funding from other sources to achieve our ultimate goal, and we continue to investigate the opportunities that are out there.

However, it's not all about the roof.

As well as stadium improvements, the fund (www.redarmyfund.co.uk) enables supporters to come together and over time raise money for things like: improved facilities for disabled fans, family, school and youth football ticket promotions, fan engagement (streamers/banners and such like) and recognising our fabulous history

through a club museum.

We also want to make a difference for some of the community groups out there, and this week we made our first move into that area by using the Red Army Fund to supply two tickets and a stationery set gift for the "Memory Makers" programme, which is a new project from the Swindon charity SMASH.

The programme matches children aged 9 to 12 years with adult volunteer Memory Makers. By meeting regularly and sharing simple and fun activities Memory Maker volunteers aim to build children's store of positive memories and support their emotional and social development.

The tickets and the gift are very low cost, but will hopefully bring some happiness to the young beneficiary. Ultimately a lot of our work is about getting these young

kids of Swindon interested in the club as they are the supporters of the future.

Many of the SMASH children love football and have expressed an interest in watching a professional match. Unfortunately the normal cost of Swindon Town tickets for the children and their volunteers is too much for the Charity's limited resources and that's where we have stepped in.

Going forwards, we've promised to do what we can to support the SMASH efforts by advertising their initiatives via our website and member newsletters.

They do need more volunteers (males in particular) so if you're interested in becoming a SMASH volunteer, and would be willing to take a youngster along with you to watch a Swindon match, please email admin@smashyouthproject.co.uk

Your Club, Your Trust



Back in the team after being one of those players in Paul Godfrey's overcrowded treatment room, the on-loan Birmingham man is now targeting a good run of results for the Town.

As the rain lashed against the windows at Town's Beversbrook training base, the frontman declared that the 2-1 win over Scunthorpe United last time out at SN1 has boosted morale in the camp.

"The morale has been good this week so hopefully we can continue that and go on a run now," he told Town legend and current BBC Wiltshire pundit, Sam Parkin.

"We've got a good squad here and it was weird seeing the team going on the bad run of results that they did but we're back now and hopefully we can go on that run."

Thomas was one of those players side-lined during Swindon's run of defeats and admits that he had never encountered a similar scenario in football before.

"No, I haven't," he said. "That's probably the reason why they went on such a bad run having so many players out. I don't think I've ever

seen that at any other club - I think there were 12 players out all in one go so it must have been really difficult. I think only Nathan [Thompson] is out at the moment so we're back to full strength now and we can get some good results."

The striker's outing against the Iron was the first time he had gained match minutes since gingerly leaving the pitch against Colchester United in September. The County Ground has witnessed a change in management recently and Thomas says that there has been one major change since the arrival of Martin Ling.

"We're still trying to play the passing style of football," he explained. "But the formation has changed going with two up front instead of one."

After a successful season last term and an unbeaten start to this campaign, have Town's pre-season targets changed after this

"We've got a good squad here and it was weird seeing the team going on the bad run of results that they did but we're back now and hopefully we can go on that run."

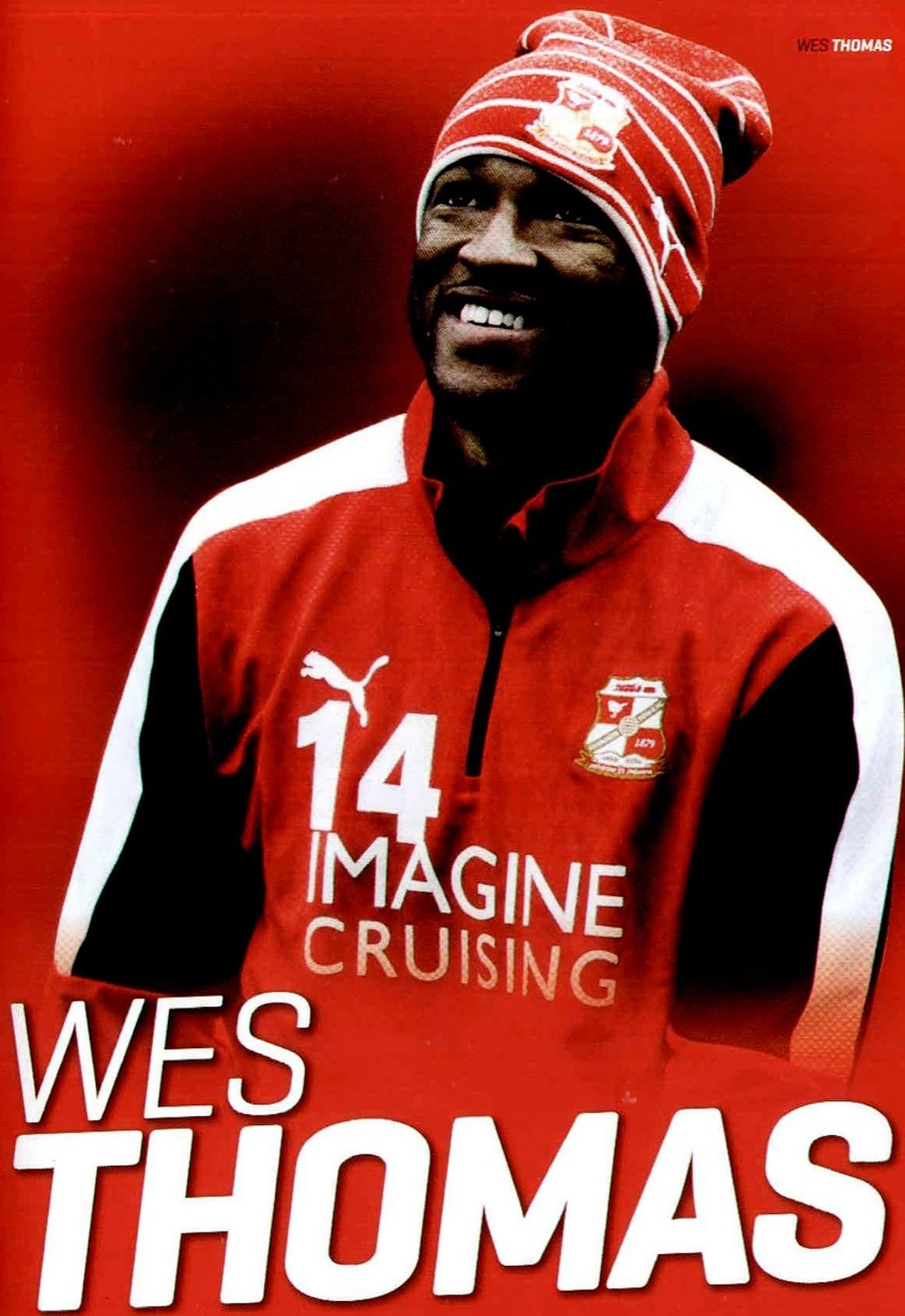
run of form?

"If we adjust them and go on a good run, are you going to do them again?" Thomas replied. "We'll see where we are come Christmas time then if it doesn't look like we're reaching where we want to go, you can adjust it but right now, keep going, go on a run and see what happens in the New Year."

As one of the loanees that manager, Martin Ling must try to shoehorn into his matchday squad, Thomas admits that the competition for places is healthy for the players.

"That's only a good thing as a manager when you've got a whole squad to pick from," he said. "The boys are wanting to impress because everyone wants to play."

WES THOMAS



WES
THOMAS

HANDS ON REPORTING!

THE NEW, FREE KICK IT
OUT APP ALLOWS YOU
TO REPORT ALL INSTANCES
OF DISCRIMINATION ACROSS
EVERY LEVEL OF THE GAME

- ✓ ATTACH **PHOTOS** AND **VIDEO** TO REPORTS
- ✓ REPORT **SOCIAL MEDIA** ABUSE
- ✓ REPORT **CONFIDENTIALLY**



**DOWNLOAD THE
NEW APP TODAY**



Download on the
App Store



ANDROID APP ON
Google play



FACEBOOK/KICKITOUTOFFICIAL



@KICKITOUT



INFO@KICKITOUT.ORG



0800 169 9414



@KICKITOUT



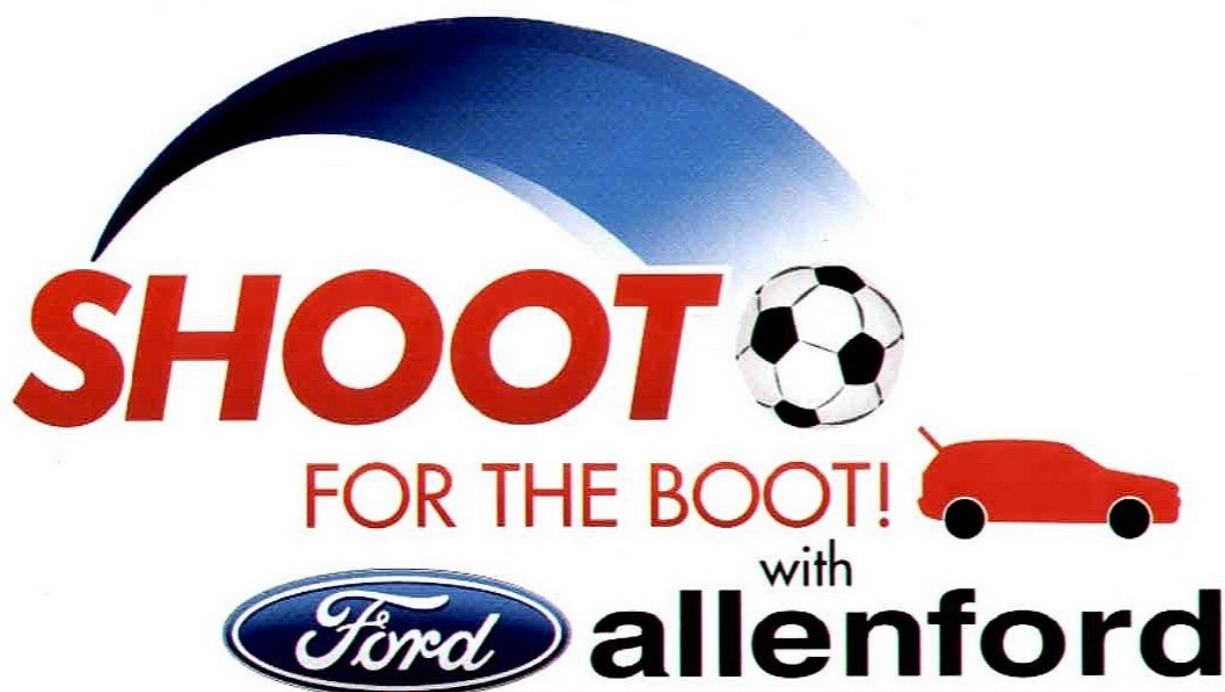
1993

Keith Scott scores the only goal of the game against Queen's Park Rangers as the Town record their first ever top-flight victory.

Picture courtesy of Richard Wintley/Calyx

On This Day

Watch the Town squad battle it out in



Follow their progress on the STFC    channels.

Are you ready for the Next Generation?

A-Class £249 per month plus advance rental*

+3 Years FREE Servicing[^]

Plus all Swindon Town supporters will
receive a £250 discount on all New and Used cars.
(On production of this advert)

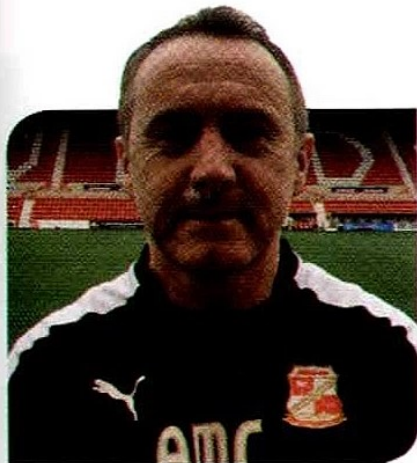
Call Mercedes-Benz of Swindon
to find out more on 01793 979176



Mercedes-Benz

Mercedes-Benz of Swindon
Drakes Way, Swindon SN3 3HT
www.mercedes-benz-sytner.co.uk 01793 979176

* Finance payments include VAT at 20%. Finance offers based on a 36 month Mercedes-Benz Personal Contract Hire agreement on 10,000 miles per annum. Excess mileage charges may apply. A-Class offer requires an advance rental of £3,182 followed by 36 monthly payments of a £249 finance rental. No ownership option. ^ 3 years free servicing relates to three consecutive services which will be issued as part of a service plan and is available on selected models excluding AMG 45 models purchased and delivered before 30th September 2015. Orders/credit approved on selected models between 1st July 2015 and 30th September 2015, registered by 31st December 2015. Model shown for illustration purposes only.



ALAN McLOUGHLIN

Two weeks ago, the Under-16s played Arsenal at Mile End, the Arsenal academy training ground, during school hours.



We knew the game would be challenging for the U16s and the staff. They took the challenge on and ended the afternoon with an excellent performance, coming away with a 2-0 victory with Kai Alleyne scoring both goals in the second half.

We have focused on the 'what ifs' scenarios this season. What if we lose the ball while attacking? Are we organised to defend or press the ball quickly? Can players regain their shape quickly and effectively to press and affect the ball? This has been a focus for players and staff alike and we have been very pleased with the reaction from the players and the positive outcomes which have stemmed from these strategies put in place.

After the Arsenal game, I headed to Chelsea where our Under-13s were invited to play Chelsea's Under-13s in the evening. After a nervous start the Under-13s can take great credit from their

second half performance to be narrowly edged out by Chelsea by four goals to two. We'd like to thank both Arsenal and Chelsea and all the Category One clubs who are willing to play and facilitate our academy. This is great credit to Jeremy Newton's efforts to take the academy forward over the past ten years that Category One teams see playing the Swindon Town academy as a challenge for their and our players in Foundation and Development phases. Over the years, the Swindon Town academy has continued to produce players capable of playing league football and will continue to do so in the future hopefully with continued support from the club combined with our excellent coaches and coaching from all the academy staff both full-time and part-time and not to forget Karen Ainscow in our academy office.

I would also like to thank the Swindon Town Supporters Club for their continued support of

"This is great credit to Jeremy Newton's efforts to take the academy forward over the past ten years that Category One teams see playing the Swindon Town academy as a challenge for their and our players in Foundation and Development phases."

the academy. We are very grateful for all the hard work and the numerous ways they have supported us over many years. They have been instrumental in helping us fulfil fixtures at the fantastic facility at the New Gerard Buxton Sports Ground in Royal Wootton Bassett. The staff at the facility have been extremely welcoming and we'd like to extend our thanks as the STFC academy. We have already used the facility to play Oxford's Under-16s where we ran out 2-1 winners and a fortnight ago, the Under-15s defeated Wolverhampton Wanderers Under-15s, 3-1. The superb venue allows our academy players to enhance their development under the lights watched by a paying public on a great playing surface. It's a learning/development experience for every single one of them - staff included. All Swindon Town fans are welcome to come along to these fixtures at Wootton Bassett to see the future of this football club. As well as our regular fixtures, we have upcoming fixtures against Tottenham Hotspur and Manchester United. These are exciting times to be a Swindon Town academy player and staff member!

Alan McLoughlin
ACADEMY PHASE COACH



Cockleberry Roundabout,
Bridgmead & Greenbridge



TM

© 2015 McDonald's.

AXIS SIGNS LTD

All Types Of Exterior &
Interior Signage

01793 693443

www.axissigns.co.uk



AXIS

ESTD 1977



www.imsm.com



ISO 9001

Quality Management

ISO 14001

Environmental Management

BS OHSAS 18001

Health & Safety Management

ISO 27001

Information and Data Security

ISO 20000

Information Technology

ISO 22000

Food Safety Management



IMSM Ltd. 4th Floor, Holbrook House, Station Road, Swindon, Wiltshire SN1 1HH
email: enquiries@imsm.com



SCOTT LINDSEY

What was pleasing about the recent 3-1 win over Bristol Rovers was that the new gaffer, Martin Ling was there watching which is fantastic for us.

We've got a good management team in place with Ross Embleton coming in now too. Most of his coaching career has been with youth players so we have a management team here that show a really keen interest in the boys.

I thought we did well in the first half. We had a lot of possession but we were getting to a point up the pitch where we turned the ball over quite a lot. As a result, we ended up defending our own turnovers of possession on a number of occasions in the first half. Despite having quite a lot of the ball, we didn't go anywhere with it. Conditions were difficult - we had a little

bit of a wind coming down the hill at us in the first half. In the second half we had that advantage, I suppose and we were more than comfortable. We were trying to pass the ball for a reason. Obviously it was nice to win as well but I was a little bit disappointed that we conceded a goal.

We've spoken about the FA Youth Cup defeat at Cheltenham but we've not analysed it too much because I felt that it was an evening where the occasion was probably too big for the boys. It was an unfamiliar performance from the lads if we're going to break it down even further. Since then [and before then] they've

"We were trying to pass the ball for a reason. Obviously it was nice to win as well but I was a little bit disappointed that we conceded a goal."

been brilliant so we don't need to over-analyse the one game they've lost. Let's look at all the games they've won which is a massive positive.

At the weekend, we faced Exeter at home which is a game I always enjoy. They try and play a bit of football which we don't really see at our level. Not many teams try to play good football but Exeter are one of those teams so it's always an interesting game and it will be a good test for our boys.

Scott Lindsey
UNDER-18S MANAGER



EXCLUSIVE SWINDON TOWN OFFER



**TREBLE
THE
ODDS**

On your first bet

BET ON ANY SELECTION OF YOUR CHOICE!

Bet	Odds	Winnings	Winnings X3
£10	10/1	£100	£300

Winnings paid in CASH | Bet at normal odds | Extra winnings paid within 72 hours



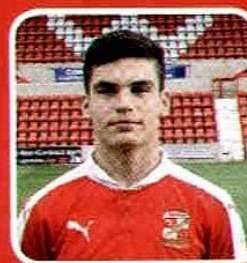
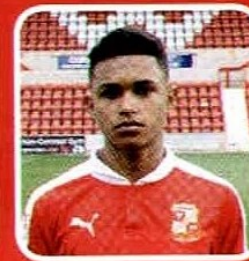
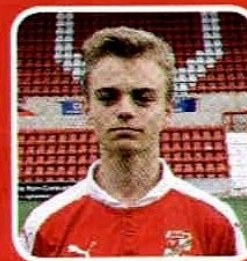
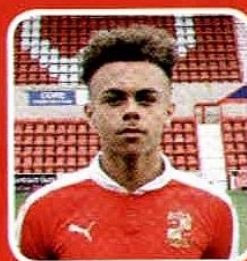
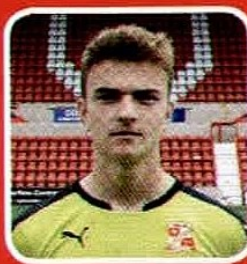
Download the App

888
sport

New customers only. Min bet £5, Max bet £10. Odds subject to change. Extra winnings added within 72hrs of bet settlement. See site for full T&C's. 18+. Please bet responsibly.



YOUTH TEAM SPONSORS



PAGE SPONSOR



PAGE SPONSOR

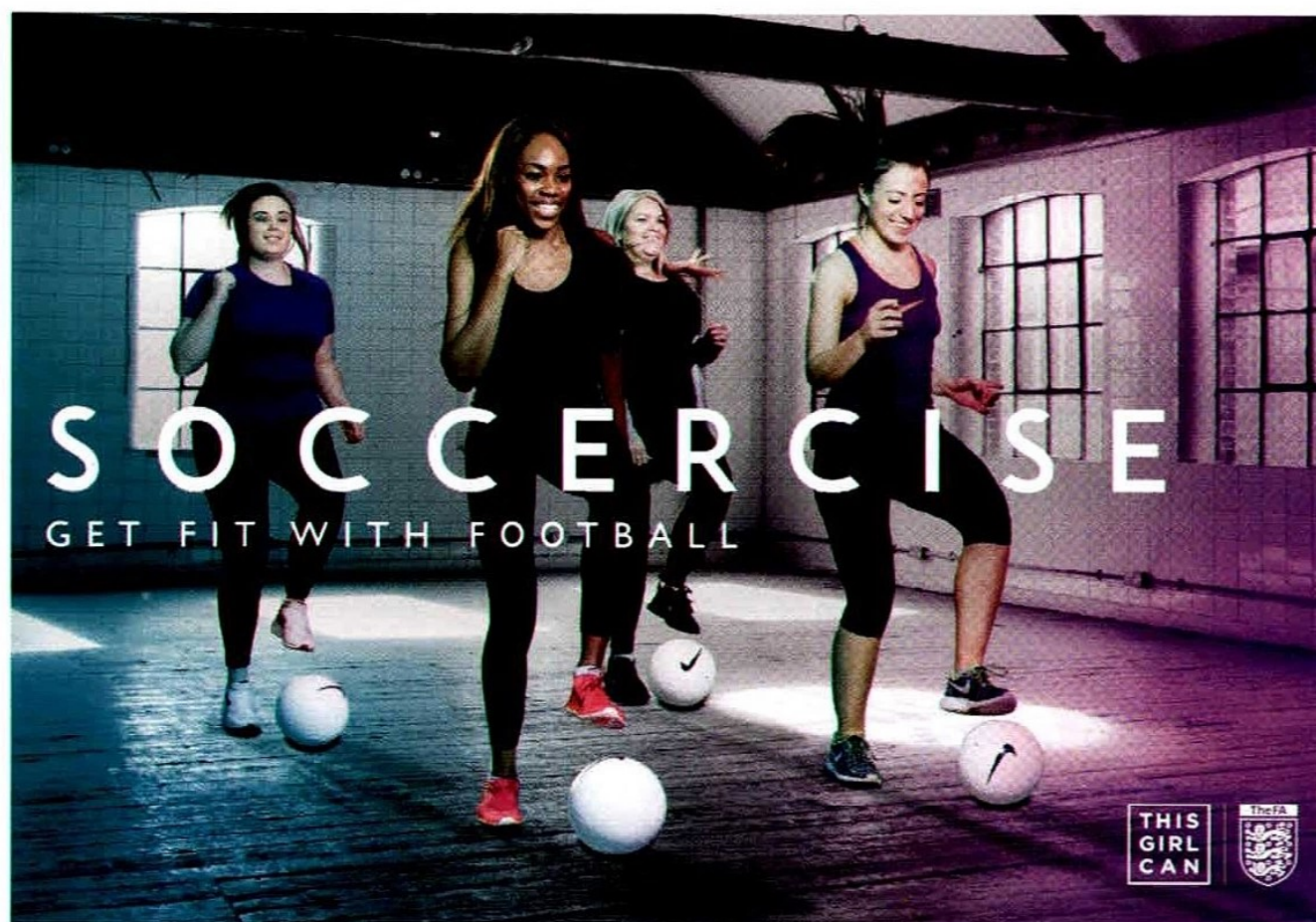


**AVAILABLE TO
SPONSOR, CALL
0844 880 1094**



**AVAILABLE TO
SPONSOR, CALL
0844 880 1094**

STFC LADIES & GIRLS DEVELOPMENT



GIRLS DEVELOPMENT

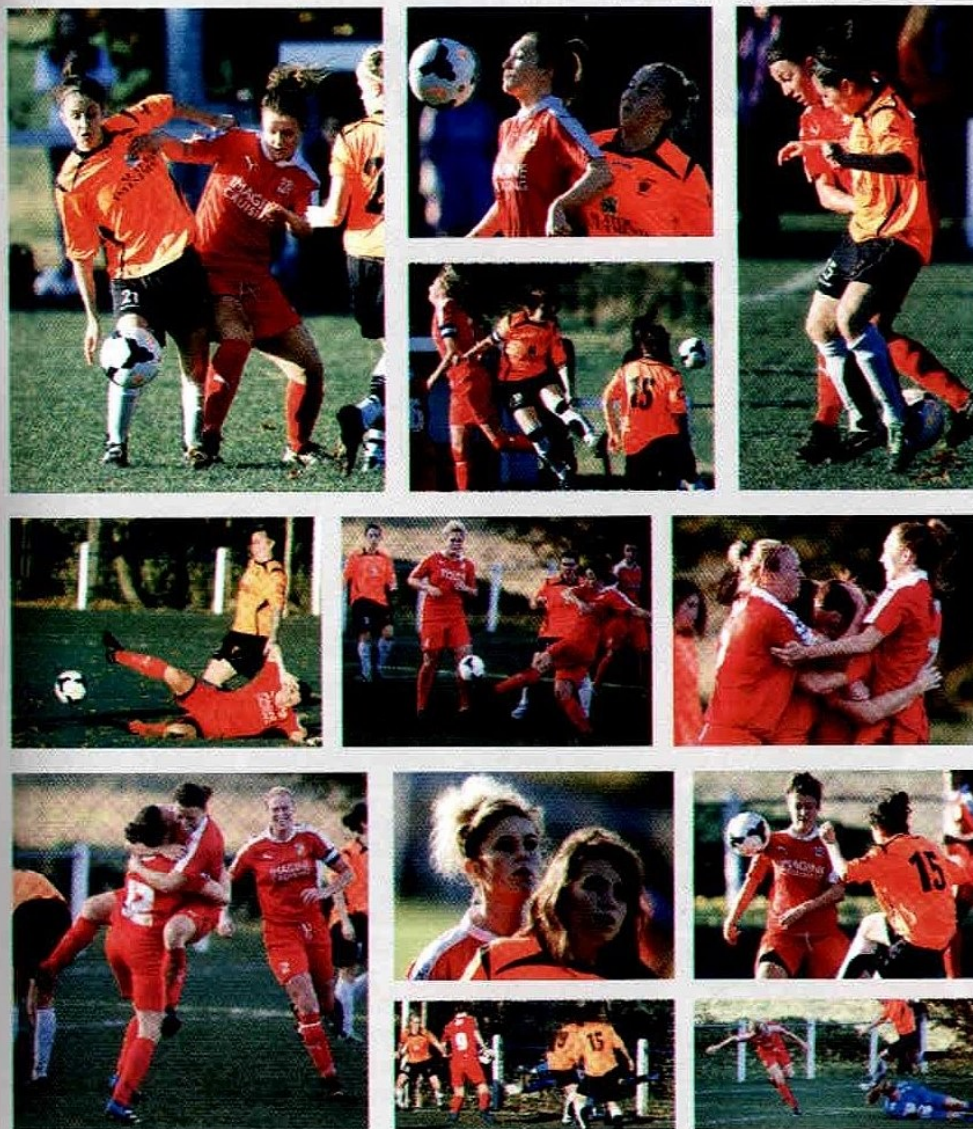
Our Women and Girls Development Programme continues to grow and we are delighted that we have linked up with Commonweal School to run the only Female Football Education Programme in Wiltshire.

This excellent new programme is aimed at females post-16 students looking to further enhance their sporting education by giving them the opportunity in pursuing a long-term career within the sports and leisure industry. Recruitment for the course is well on the way with the target being 16 female students to kick-off the new term as from September 2016. The students will undertake their studies to either A-level or vocational qualification standard. In addition, the students will train three times a week while participating in weekly fixtures against other professional football clubs such as Southampton, Cardiff City and Swansea City to name but a few. The students will also have the opportunity to engage in Coach Education Sessions leading them onto taking their FA Level 1 qualifications.

We are running an open evening at Commonweal Sixth Form on Monday November 30th at 6.30pm so please feel free to come along and have a look.



STFC LADIES



"...giving them the opportunity in pursuing a long-term career within the sports and leisure industry."

It's the turn of our Advanced Centre and Girls Development class next week as they entertain Marlborough Town Angels in a friendly fixture. These fixtures allow our girls who do not participate in affiliated football, an opportunity to play in match environments.

Soccercise at the Highworth Recreational is beginning to gather momentum and we are in the process of starting our second session at our main sponsors, Intel. This will start in January and we will be running a taster session on Tuesday 8th December, so watch this space!

If you're a female and are interested in joining any of these programmes please contact me [Shane Hewlett] on 07919112982 or email shane@stfc-fitc.co.uk

Enjoy the game, COYR!

Shane Hewlett
FEMALE FOOTBALL DEVELOPMENT OFFICER

KEEP IN TOUCH

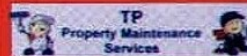
For more information contact us...

Martin Wheeler
STFC Ladies Chairman

Roger Reeves MBE
STFC Ladies General Manager

Caroline Brown
STFC Ladies Secretary
07825778284

Steve Robertson
First Team Manager
stfccladies@hotmail.com



Female Football Development Officer
Shane Hewlett
01793 421303





FOOTBALL IN **THE COMMUNITY**



OUR COURSES

- Holiday Courses
- Soccer Centres
- After School Coaching Clubs
- Saturday Team Club
- Tiny Tots (2-3 year olds)
- Mini Soccer (4-5 year olds)
- Extra Time (over 60s Healthy Living Programmes)
- Birthday Parties
- Disability Programme
- Twilight Football: Teenage Sessions
- Ground Tours
- Club Coaching Days
- Free In-Schools Coaching
- Girls Coaching & Development & Centre For Excellence
- Multi Sports
- Swindon Town Ladies Football Club

WILTSHIRE COUNCIL KICK IT OUT CAMPAIGN

Back in October we were delighted to again assist Wiltshire Council in the delivery of their local 6-a-side tournaments at Chippenham and Salisbury, for the respective teams to earn the right to play in the grand final which we are hosting this evening at half time. This year's competition was of a very high standard and we are pleased to announce the two teams this evening are Ivory Toast from Chippenham and Salisbury 7 representing the city of Salisbury. We would like to take this opportunity to sincerely thank Paul Pritchard and Karlene Jammeh for co-ordinating this year's tournament. This evening is also a very special occasion for Alice Hibberd who has worked for Wiltshire Council but is now changing her career path and is taking up a new position at the Hampshire Football Association. Everybody at Wiltshire Council and STFIC would like to wish Alice every success in her new position in Hampshire. We are really looking forward to tonight's final so please give all the players your support at half time by showing your appreciation for their efforts.

WALKING FOOTBALL FOR THE OVER 50S

Mitchell Coombes - a valued member of our team - is currently undertaking a 14-month placement with our FITC Trust as part of his university degree course at Bournemouth. Mitch is working

"...we are pleased to announce the two teams this evening are Ivory Toast from Chippenham and Salisbury 7 representing the city of Salisbury."



KEEP IN TOUCH:

Facebook: STFITC

Twitter: @STFITC

Web: www.stfitc.co.uk

Tel: 01793 421303



extremely hard in order to engage as many people as he can within various projects such as blind football and the aforementioned walking football. We are looking to recruit as many people as possible to take part on our new Wednesday morning session which is delivered at the cricket club adjacent to Swindon Town from 10.30-11.30am. Any of you out there who would be interested in taking part and joining in the fun please contact Mitch on 01793 421303 or email mitchell.combes95@gmail.com.



DSACTIVE MATCH V NORTHAMPTON TOWN

We are all very much looking forward to Sunday 29th November when our DSAActive team will be playing against our counterparts from Northampton Town. They are organised by Russell Lewis, the ex-Swindon Town legend from the late '70s and early '80s. This game is of great significance as we will be paying our respects to the late Stephen Thomas who was tragically killed last month in a boating accident in Canada. Both sets of players will be contesting the Stephen Thomas Cup which will now be an annual event in memory of the wonderful Stephen Thomas.



PROFESSIONAL FOOTBALL EDUCATION PROGRAMME

I am sure most of you are aware that, from September 2016, we are setting up our new Professional Football Education Programme in conjunction with Commonweal Sixth Form. On Monday 30th November at 6.30pm we, along with the new gaffer, Martin Ling, will be attending a parents open evening for people to come along with their sons and daughters to see what's on offer. If you would like further information on this please do not hesitate to contact myself (Clive Maguire), Jon Holloway or Shane Hewlett on 01793 421303 or, alternatively, come along on the night to get a taste of the great things on offer within the programme.



DEVELOPMENT CENTRES

LINK CENTRE

Swindon Borough

Mon:	4.00-5.00	4-5yrs
	5.00-6.00	5-7yrs
Sat:	9.15-10.00	3-4yrs Tots
	8.30-9.15	3-4yrs Tots

STRATTON

Grange Drive

Tues:	3.30-4.30	5-6yrs
Wed:	1.00-1.45	2-3yrs Tots
	1.45-2.30	3-4yrs Tots
	3.30-4.30	7-8yrs
	4.30-5.30	8-9yrs
	5.00-6.00	5-14yrs GK
Fri:	3.30-4.30	4-5yrs

CRICKLADE

Fri:	5.30-6.30	5-7yrs
------	-----------	--------

CROFT

Swindon Borough

Sat:	9.00-10.00	7-8yrs
	10.00-11.00	4-6yrs
Mon:	1.00-1.45	3-4yrs Tots
	1.45-2.30	3-4yrs Tots

HAYDON CENTRE

Swindon Borough

Thurs:	4.00-5.00	5-6yrs
	5.00-6.00	7-8yrs
	6.00-7.00	9-11yrs

OASIS

Mon:	5.00-6.00	8-11yrs/11-14yrs
------	-----------	------------------

RIDGEWAY

Wed:	6.00-7.00	8-11yrs
------	-----------	---------

DORCAN

Swindon Borough

Mon:	5.00-5.45	4-5yrs
Tues:	5.00-5.45	4-5yrs
Thurs:	5.00-6.00	8-11yrs
Fri:	5.00-6.00	5-6yrs
	6.00-7.00	6-7yrs

BEVERSBROOK

Wed:	5.00-6.00	5-7yrs/8-11yrs
------	-----------	----------------

GIRLS CENTRES

Link Centre

Mon:	5.00-6.00	8-12yrs
------	-----------	---------

Stratton

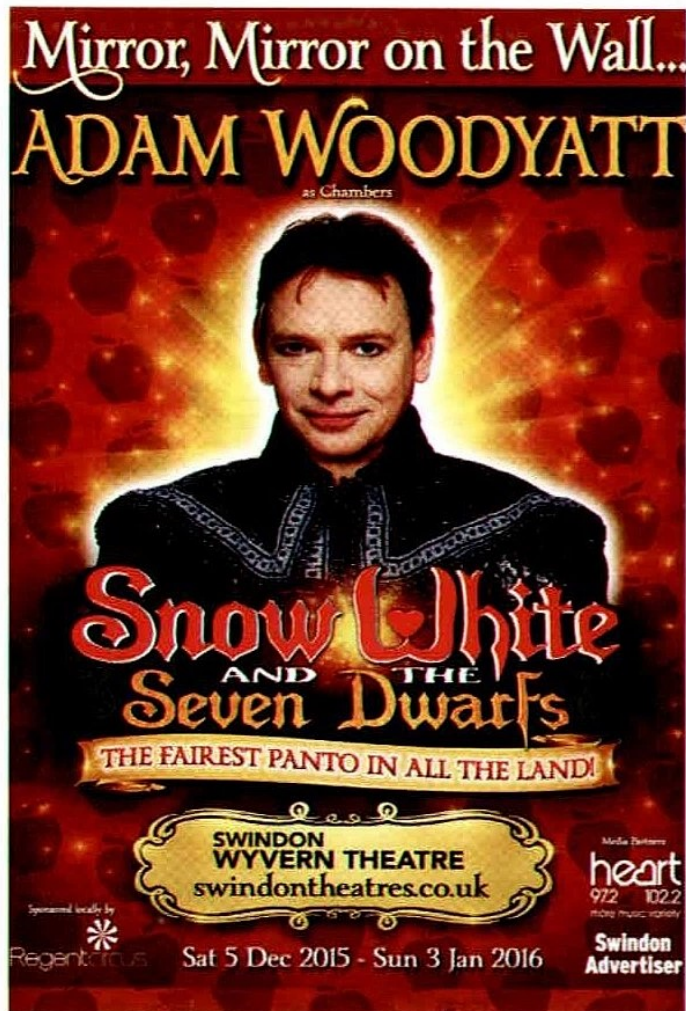
Tues:	4.30-5.30	5-10yrs
-------	-----------	---------

Thurs:	4.30-5.30	7-12yrs
--------	-----------	---------

Dorcan

Friday:	5.30-6.30	11-14yrs
	5.30-6.30	11-15yrs

(Advanced girls, invite only)




Churchfields Academy
A Passion for Excellence

Visit Us

Come and see why Ofsted Graded us as Good

Tours can be set up at any time for students wishing to transfer from Primary or another Secondary

Call 01793 487286
www.churchfields.org





the brain injury association

Headway
Swindon & District

improving life after brain injury

Care Line
01793 436908

www.headwayswindon.org.uk

Charity Number: 1021036



SUPER SAMMY SAYS

Hopefully the trip to Fleetwood on Saturday yielded another three points. After witnessing the 2-2 draw there last January, I decided it was the turn of a different co-commentator to enjoy the delights of the Fylde Coast. Top man Chalky!

I was happy to make do with the BBC Wiltshire studio and then on to help my little brother celebrate turning 30. Crazy - where do the years go?

I'll be back in the stands this evening to see another of my former clubs roll into town (I definitely say that most weeks!). I spent a frustrating but enjoyable year at the Banks's Stadium in the 2009/10 season.

Like so often post-Swindon career, I started the season in fine form but struggled for game time as the season wore on. For long parts I played understudy to the partnership of Darren Byfield and Troy Deeney. They complemented each other very well in all honesty and having seen what Troy has gone on to achieve, looking back, it's hard for me now to have too many complaints.

I caught up with Darren in the summer when we were part of the Chelsea and Aston Villa teams respectively in a PFA-run tournament in Tobago. Darren was as good as anyone in the competition and he's still playing now for Solihull Moors in the Conference North at the ripe old age of 39. A fantastic professional and a Walsall legend after his Play-Off-winning goal for them back in 2001.

One huge downside of that year was not getting the opportunity to play at the County Ground one more time, during a 1-1 draw at the back end of the Charlie Austin bobble season - I spent the entire 90 minutes on the substitutes' bench. I knew, having decided I would be moving to Scotland the following summer, that it was probably my last chance to have a run around on the pitch that held so many happy memories for me. I remember the home fans singing my name as I warmed up and although I understand that sometimes there is no room for sentiment in football, it was a meaningless end of season game with us safely positioned in mid-table at the time. I was bitterly upset that I didn't



make it onto the pitch. It's maybe why I always take a few steps on the pitch now if I get the opportunity. Marcus the groundsman doesn't read this does he?

Tonight's game brings Martin Ling and his former Orient assistant manager and now-Walsall gaffer, Dean Smith back together on the touchline.

Like I said in my last programme notes, I have a lot of respect for both of them after my brief spell at Leyton Orient when they were in charge. I'm not the least bit surprised that Dean has gone on to be such a success as a 'number one' at Walsall. He was actually the youth team boss during my season in the West Midlands as well. Like Martin is here, he's a club legend at Walsall and having seen his coaching at close quarters, I'm delighted that he is doing so well. I'm sure the good friends are looking forward to trying to outwit each other this evening.

I watched Walsall against Chelsea in the Capital One Cup earlier in the season and thought they were a very good side. They actually tried to out-football the Premier League champions which was remarkable in itself. On another night the result could have been different. Tom Bradshaw was missing

that night and he is a player I really like and one of the main threats that Swindon will have to deal with this evening.

I was delighted that Martin Ling was able to end his first home match in charge with a win. It wasn't the prettiest of games played in terrible conditions but after the recent poor run, the result was the most important thing. The second half was a much better performance and I thought Swindon were good value for the narrow victory. With the international players back in the building and a few of the injured players returning to the fold, everyone can be feeling a lot more optimistic about getting up that table.

I, like everyone, was absolutely horrified by the tragic events in Paris last weekend. Impossible to get your head around. I must admit that prior to last Tuesday night's game at Wembley, I didn't feel it should have gone ahead.

Ultimately it was great to see the two sets of fans turn up and put on such a united front. I can only imagine how hard that must have been for the French players, especially those directly affected.

I remember playing for Northampton Town at Middlesbrough on 9/11 and watching the tragedy unfold from our hotel that afternoon. There are times when a football match can feel so insignificant and I remember feeling like that when I took to the field that evening at the Riverside.

It's easy to get all-consumed in this wonderful sport of ours but it's worth thinking about what is really important in this world we all live in.

Hoping for another home victory tonight.

Come On You Reds!
Sam

ON THE ROAD



The SAS Travel office is open at the following times:

Tuesday & Thursday 7pm-8pm

Before all home fixtures until 30 minutes prior to kick off

All seats must be paid for at time of booking.

Proof of age may be required when booking Junior seats.

Credit/debit card payment will be taken at time of booking.

All U16's must be accompanied by an adult

At any other time supporters can call the office on 01793 536757 and leave a message on the answer phone and SAS Travel will reply as soon as possible. Alternatively, email sastravel@sky.com for further details.

You can now follow SAS Travel on Twitter - for all the latest away travel news, follow @SAS_Travel

The following guidelines are designed to allow SAS Travel to ensure that they can take as many fans as want to travel with them to each away game.

- As a general rule, SAS Travel have to order coaches one week before the fixture date. Therefore if you leave booking until within this time, they cannot always guarantee that there will still be spaces available.
- After this time, SAS Travel will always try (alongside their coach provider) to source further coaches and meet all the demand for spaces, although they cannot run a coach unless economically viable to do so.
- SAS Travel tend to open games for booking around three weeks before the fixture date and usually have three fixtures booking at any one time. This may increase to four due to fixture rearrangements.
- SAS Travel advise that the best policy is to book as early as you can to ensure that you get the spaces that you want.

2015/16 MILEAGE

Barnsley - 182 miles
Blackpool - 200 miles
Bradford - 205 miles
Burton - 120 miles
Bury - 173 miles
Chesterfield - 156 miles
Colchester - 154 miles
Coventry - 88 miles
Crewe - 131 miles
Doncaster - 176 miles
Fleetwood - 205 miles
Gillingham - 134 miles

Millwall - 85 miles
Oldham - 172 miles
Peterborough - 112 miles
Port Vale - 124 miles
Rochdale - 179 miles
Scunthorpe - 198 miles
Sheff Utd - 166 miles
Shrewsbury - 121 miles
Southend - 137 miles
Walsall - 86 miles
Wigan - 165 miles
TOTAL: 3,469 miles

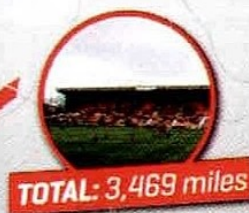


CHESTERFIELD
28/11/2015

£22 Members

£20 Non Members

Departs at 9.30am



TICKET DETAILS



CHESTERFIELD v SWINDON 28/11/2015 | KICK OFF: 15:00



HOW TO BUY

In Store

Online at www.eticketing.co.uk/swindontown

Telephone 08718761993 option 1

[£2 booking fee per ticket applies]

Adult - £20 | 065 - £13 | 17-18yrs - £13 | 16 & Under - £9

Disabled - Age-related price | Helper - Free

For disabled tickets please call 08718 761 993 option 2

HOME TICKETS

SWINDON TOWN vs ROCHDALE



sky BET

Saturday 12th December / Kick-Off: 3pm
Grade A Fixture, see prices to the right

SWINDON TOWN vs GILLINGHAM



sky BET

Saturday 26th December / Kick-Off: 3pm
Grade A Fixture, see prices to the right

SWINDON TOWN vs SOUTHEND UNITED



sky BET

Saturday 9th January / Kick-Off: 3pm
Grade A Fixture, see prices to the right

SWINDON TOWN vs CREWE ALEXANDRA



sky BET

Saturday 16th January / Kick-Off: 3pm
Grade B Fixture, see prices to the right

AWAY TICKETS

CHESTERFIELD vs SWINDON TOWN



sky BET

Saturday 28th November / Kick-Off: 3pm
Ticket prices at www.swindontownfc.co.uk

SHREWSBURY T vs SWINDON TOWN



sky BET

Saturday 19th December / Kick-Off: 3pm
Ticket prices at www.swindontownfc.co.uk

BURTON ALBION vs SWINDON TOWN



sky BET

Monday 28th December / Kick-Off: 3pm
Ticket prices at www.swindontownfc.co.uk

PORT VALE vs SWINDON TOWN



sky BET

Saturday 2nd January / Kick-Off: 3pm
Ticket prices at www.swindontownfc.co.uk

15/16 TICKET PRICES

In an attempt to encourage younger supporters to the CG, prices have been slashed for Junior fans with Under-11s without a Junior Red membership getting in for just £2. Fans under the age of 17 have also seen a drop in matchday prices. Price categories have also changed from Gold, Silver and Bronze to A Grade and B Grade fixtures.

A GRADE:

	SIDES	T.END
Adults	£25	£19
Student/065	£19	£15
Young Adults [17-19]	£12	£12
Juniors [U17]	£8	£8
Juniors [U11]	£2	£2
Junior Red [U11]	FREE*	FREE*

B GRADE:

	SIDES	T.END
Adults	£23	£18
Student/065	£18	£14
Young Adults [17-19]	£12	£12
Juniors [U17]	£8	£8
Juniors [U11]	£2	£2
Junior Red [U11]	FREE*	FREE*

ADULT:

Aged 19-64 on fixture date

CONC. SENIOR 065:

Aged 65 on fixture date

CONC. STUDENT:

In Full Time Education

CONC. DISABLED:

Registered disabled only

YOUNG ADULT:

Aged 17-19 on fixture date

JUNIORS UNDER 17:

Aged 16 or under on fixture date

JUNIORS UNDER 11:

Aged 10 or under on fixture date

*To qualify for a FREE Under 11s ticket, children need to join the Junior Red scheme for a one-off payment of £30. Proof of age will be required at the time of purchase. Under 11s must be accompanied by a full paying Adult. There is a maximum of two free tickets per full paying Adult. Junior Red tickets must be purchased through STFC either in store or by ringing 0871 876 1993 and selection option 2.

**Please note Juniors must be accompanied by an Adult in the FastPlant Town End.

***Student tickets must be purchased before matchday.

**You can book tickets
online or by phone:**

0871 876 1993

WWW.STFCDIRECT.COM



2015/16

FIXTURES & RESULTS



RES ATT VIS POS

AUGUST

Sat 8	Bradford City	H	FL1	4-1	8,080	1,025	2	Vigouroux	N. Thompson	Ormonde-Ottewill	Turnbull	Branco
Tue 11	Exeter City	H	CAP1	1-2	4,693	506	-	Vigouroux	N. Thompson	Ormonde-Ottewill	Turnbull	Branco
Sat 15	Bury	A	FL1	2-2	3,947	439	4	Vigouroux	N. Thompson	Ormonde-Ottewill	Turnbull	Branco
Tue 18	Port Vale	H	FL1	2-2	7,026	249	9	Vigouroux	N. Thompson	Ormonde-Ottewill	Turnbull	Branco
Sat 22	Southend United	A	FL1	1-0	5,839	580	6	Vigouroux	N. Thompson	Ormonde-Ottewill	Turnbull	Branco
Sat 29	Sheffield United	H	FL1	0-2	8,614	1,117	8	Vigouroux	Turnbull	Branco	Williams	K. Stewart

SEPTEMBER

Tue 1	Newport County	A	JPT1	1-1*	1,434	453	-	Belford	Barry	Brophy	Turnbull	Branco
Sat 5	Crewe Alexandra	A	FL1	3-1	4,400	417	6	Vigouroux	Barry	Ormonde-Ottewill	Turnbull	Branco
Sat 12	Barnsley	A	FL1	1-4	8,227	351	8	Vigouroux	Barry	Williams	Turnbull	Branco
Sat 19	Burton Albion	H	FL1	0-1	7,005	203	10	Vigouroux	N. Thompson	Williams	Turnbull	Branco
Sat 26	Colchester United	H	FL1	1-2	6,687	212	17	Belford	Turnbull	Williams	Branco	Kasim
Tue 29	Doncaster Rovers	A	FL1	2-2	4,693	203	14	Belford	Brophy	Williams	Turnbull	Branco

OCTOBER

Sat 3	Blackpool	A	FL1	0-1	6,704	772	17	Vigouroux	Barry	Brophy	Turnbull	Branco
Tue 6	Oxford United	A	JPT2	0-2	9,013	1,179	-	Vigouroux	Barry	Ormonde-Ottewill	Turnbull	Branco
Sat 10	Peterborough United	H	FL1	1-2	7,025	439	19	Vigouroux	Brophy	Ormonde-Ottewill	El-Abd	Branco
Sat 17	Millwall	A	FL1	0-2	8,524	561	20	Vigouroux	Barry	Ormonde-Ottewill	El-Abd	Branco
Tue 20	Oldham Athletic	H	FL1	1-2	6,430	141	23	Vigouroux	Barry	Ormonde-Ottewill	El-Abd	Branco
Sat 24	Coventry City	H	FL1	2-2	8,309	1,686	23	Vigouroux	Barry	El-Abd	Turnbull	Branco
Sat 31	Wigan Athletic	A	FL1	0-1	8,486	529	23	Vigouroux	Barry	El-Abd	Turnbull	Branco

NOVEMBER

Sat 7	Rochdale	A	FAC1	1-3	2,060	tbc	-	Vigouroux	Barry	El-Abd	Turnbull	Branco
Sat 14	Scunthorpe United	H	FL1	2-1	6,957	320	20	Vigouroux	Barry	El-Abd	Turnbull	Branco
Sat 21	Fleetwood Town	A	FL1	1-5	2,880	tbc	22	Vigouroux	Barry	El-Abd	Turnbull	Branco
Tue 24	Walsall	H	FL1	19.45								
Sat 28	Chesterfield	A	FL1	15.00								

DECEMBER

Sat 12	Rochdale	H	FL1	15.00								
Sat 19	Shrewsbury Town	A	FL1	15.00								
Sat 26	Gillingham	H	FL1	15.00								
Mon 28	Burton Albion	A	FL1	15.00								

JANUARY

Sat 2	Port Vale	A	FL1	15.00								
Sat 9	Southend United	H	FL1	15.00								
Sat 16	Crewe Alexandra	H	FL1	15.00								
Sat 23	Sheffield United	A	FL1	15.00								
Sat 30	Barnsley	H	FL1	15.00								

FEBRUARY

Sat 6	Gillingham	A	FL1	15.00								
Sat 13	Colchester United	A	FL1	15.00								
Sat 20	Blackpool	H	FL1	15.00								
Sat 27	Peterborough United	A	FL1	15.00								

MARCH

Tue 1	Doncaster Rovers	H	FL1	19.45								
Sat 5	Oldham Athletic	A	FL1	15.00								
Sat 12	Millwall	H	FL1	15.00								
Sat 19	Coventry City	A	FL1	15.00								
Fri 25	Wigan Athletic	H	FL1	15.00								
Mon 28	Scunthorpe United	A	FL1	15.00								

APRIL

Sat 2	Fleetwood Town	H	FL1	15.00								
Sat 9	Bradford City	A	FL1	15.00								
Sat 16	Bury	H	FL1	15.00								
Tue 19	Walsall	A	FL1	19.45								
Sat 23	Chesterfield	H	FL1	15.00								
Sat 30	Rochdale	A	FL1	15.00								

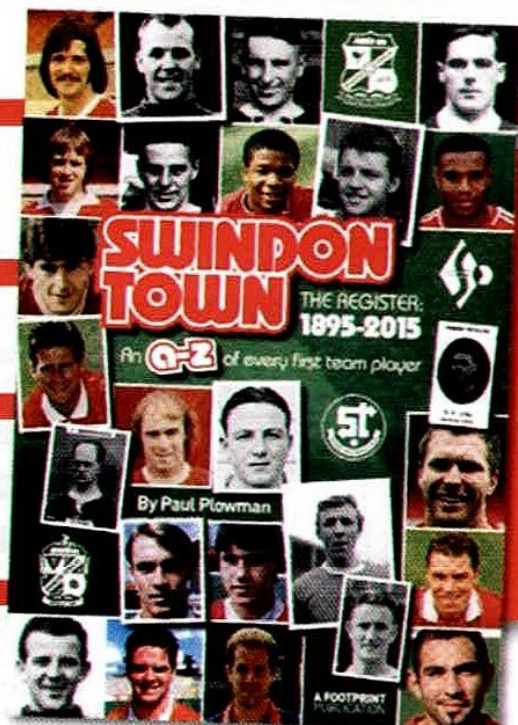
MAY

Sun 8	Shrewsbury Town	H	FL1	12.30								
-------	-----------------	---	-----	-------	--	--	--	--	--	--	--	--

*Won 7-6 on penalties



Williams	Kasim	K. Stewart	Hylton	Obika	Byrne	Robert	Rodgers	Randall
Williams	Kasim	K. Stewart	Robert	Obika	Byrne	Randall	Brophy	
Williams	Kasim	K. Stewart	M. Smith	Obika	Byrne	Robert	Rodgers	
Williams	Kasim	Rodgers	Robert	M. Smith	Byrne	Traore	K. Stewart	
Williams	Kasim	Rodgers	Robert	M. Smith	Byrne	Traore	K. Stewart	Sturby
Traore	Kasim	Rodgers	Robert	M. Smith	Byrne	Sturby		
K. Stewart	Traore	Rodgers	Robert	Randall	Marshall	I. Smith	I. Thompson	
Brophy	Traore	Rodgers	Robert	Ajose	Thomas	T. Smith	Randall	
Traore	Kasim	Rodgers	Robert	Ajose	Thomas	Kasim	Obika	Robert
L. Thompson	Traore	Rodgers	Djamea	Ajose	Thomas	Hylton	Brophy	Balmy
L. Thompson	Traore	Robert	Djamea	Ajose	Thomas	Obika	Hylton	
L. Thompson	Traore	Kasim	Djamea	Ajose	Robert			
L. Thompson	Kasim	Robert	Djamea	Ajose	Obika	Hylton	Balmy	
Brophy	Traore	Rodgers	Hylton	Ajose	Obika	Djamea	Bengoura	
L. Thompson	Traore	Rodgers	Gladwin	Ajose	Hylton	I. Thompson	Randall	Djamea
Brophy	Traore	Bengoura	Gladwin	Ajose	Djamea	Balmy	Randall	J. Stewart
Brophy	Kasim	Rodgers	Gladwin	Ajose	Traore	Balmy		
Brophy	Kasim	Rodgers	Gladwin	Ajose	Djamea	Obika	Robert	
Brophy	Kasim	Rodgers	Gladwin	Ajose	Djamea	Obika	L. Thompson	Robert
L. Thompson	Kasim	Rodgers	Djamea	Ajose	Obika	Robert	Balmy	Hylton
Orlando-Ottewill	Traore	Rodgers	Gladwin	Ajose	Obika	Thomas	Robert	
Orlando-Ottewill	Kasim	Rodgers	Gladwin	Ajose	Thomas	Robert	Obika	Brophy



ON SALE NOW
AT THE COUNTY
GROUND
SUPERSTORE

£23.50



THE
ROBINS
Suite

THE ULTIMATE PARTY PACKAGE



THE ULTIMATE PARTY PACKAGE

Are you thinking of a present to buy someone that is special in your life?
Why not book the Ultimate Party Package here at SN1!
Ideal when looking to book a small party to celebrate their day in style

PACKAGE BENEFITS

- The first drink on us - Drinks voucher worth £4 on arrival for every guest
- A complimentary Matchday Programme and Team Sheet
- 2 course Pre-Match meal
- Pitchside photo opportunity with our very own Rockin Robin
- Padded Seating in the Robins Suite seating area
- 'Star Guest' presented with a signed STFC Football & Bottle of Champagne
- Post-Match photo with the Robins Suite Man of the Match
- All professional commemorative photos of the day, will be sent following the fixture

WE WELCOME:-

**All Major Birthdays, 18th, 21st & the big 50
Stag & Hen parties
Anniversaries, or any other special occasions**

All guests including the 'Star Guest' will be entertained in The Robin's Suite, where there is a great atmosphere pre & post-match. Celebrate your day with us, amongst like minded supporters, who will be sure to give your party a very warm Robins welcome.

PRICE

£375 INC VAT (Min 6 people)
Additional guests - £55 per person

GAME CENTRE



	P	HOME					AWAY					GD	PTS
		W	D	L	F	A	W	D	L	F	A		
1 Coventry	18	7	2	0	22	10	4	2	3	14	9	17	37
2 Gillingham	18	7	2	0	23	8	3	2	4	12	15	12	34
3 Walsall	17	4	3	2	13	9	5	3	0	16	6	14	33
4 Wigan	18	6	3	0	15	3	3	3	3	14	15	11	33
5 Burton	17	5	2	1	9	4	5	0	4	7	10	2	32
6 Bury	18	4	4	1	16	13	4	2	3	14	14	3	30
7 Bradford	18	4	3	2	11	9	4	3	2	10	9	3	30
8 Millwall	17	4	1	4	13	13	4	3	1	15	11	4	28
9 Peterborough	18	4	2	3	20	16	4	1	4	19	13	10	27
10 Southend	18	5	1	3	10	9	2	5	2	10	11	0	27
11 Sheff Utd	18	5	1	3	19	13	2	4	3	10	12	4	26
12 Port Vale	18	5	3	1	16	10	2	2	5	7	11	2	26
13 Rochdale	18	4	2	3	12	10	2	4	3	10	10	2	24
14 Scunthorpe	18	5	1	3	8	5	2	1	6	14	17	0	23
15 Chesterfield	18	2	2	5	14	17	5	0	4	11	11	-3	23
16 Doncaster	18	3	4	2	10	8	2	1	6	5	16	-9	20
17 Colchester	18	3	4	2	15	14	2	1	6	12	27	-14	20
18 Oldham	18	1	3	5	9	17	2	7	0	11	9	-6	19
19 Fleetwood	18	3	3	3	17	8	2	0	7	8	19	-2	18
20 Shrewsbury	17	3	0	5	11	10	2	2	5	8	14	-5	17
21 Barnsley	18	3	1	5	10	10	2	1	6	12	20	-8	17
22 Swindon	18	2	2	5	13	15	2	2	5	10	18	-10	16
23 Blackpool	18	3	2	4	8	12	1	2	6	7	14	-11	16
24 Crewe	18	1	2	6	9	19	2	2	5	6	12	-16	13



	LEAGUE		CUP		15/16 TOTAL			
	APPS	GLS	APPS	GLS	APPS	GLS	YEL	RED
01 Lawrence Vigouroux	16	0	3	0	19	0	4	0
02 Nathan Thompson	5	0	1	0	6	0	0	0
03 Brandon Ormonde-Ottewill	10	0	2	0	12	0	0	0
04 Fabien Robert	8(7)	3	2(1)	0	10(8)	3	3	0
05 Jordan Williams	9	0	1	0	10	0	1	0
06 Jordan Turnbull	15	0	4	0	19	0	3	1
07 Drisse Traore	10(2)	0	2	0	12(2)	0	2	0
08 Yaser Kasim	13(1)	0	2	0	15(1)	0	4	0
09 Michael Smith	4	0	0	0	4	0	0	0
10 Nathan Byrne	5	3	1	0	6	3	1	0
10 Nicky Ajose	13	6	2	1	15	7	0	0
11 Kevin Stewart	3(2)	0	2	0	5(2)	0	1	0
12 Momar Bangoura	1	0	(1)	0	1(1)	0	0	0
14 Wes Thomas	5(1)	2	0	0	5(1)	2	0	0
15 James Brophy	8(2)	0	2(1)	0	10(3)	0	4	0
16 Jordan Stewart	(1)	0	0	0	(1)	0	0	0
17 Ben Gladwin	7	1	0	0	7	1	1	0
18 Louis Thompson	5(2)	0	1	0	6(2)	0	3	0
19 Jeremy Balmy	(4)	0	(1)	0	(5)	0	2	0
20 Jonathan Obika	4(5)	2	3	1	7(5)	3	0	0
21 Will Randall	(4)	0	1(1)	0	1(5)	0	0	0
22 Lee Marshall	0	0	1	0	1	0	0	0
24 Jermaine Hylton	2(3)	0	1(1)	0	3(4)	0	1	0
25 Tyrrell Belford	2	0	1	0	3	0	0	0
26 Anton Rodgers	12(2)	2	3	1	15(2)	3	0	0
27 Bradley Barry	9	0	3	0	12	0	2	0
28 Ellis Iandolo	(1)	0	(1)	0	(2)	0	0	0
29 Raphael Rossi-Branco	18	1	4	0	21	1	4	0
30 Miles Storey	(2)	0	0	0	(2)	0	0	0
31 Tom Smith	0(1)	1	(1)	0	(2)	1	0	0
32 Henrik Ojamaa	7(2)	1	1(1)	0	8(3)	0	0	0
34 Adam El-Abd	7	0	1	0	8	0	1	0



FIXTURES & RESULTS

Saturday 21st November

Bury 1-0 Burton
 Coventry 4-1 Gillingham
 Crewe 1-5 Peterborough
 Doncaster 0-2 Rochdale
 Fleetwood 5-1 Swindon
 Millwall 4-1 Colchester
 Oldham 1-2 Barnsley
 Port Vale 3-2 Chesterfield
 Scunthorpe 0-2 Bradford
 Southend 1-0 Blackpool
 Walsall 1-1 Sheff Utd
 Wigan 1-0 Shrewsbury

Tonight

Bradford v Coventry
 Bury v Scunthorpe
 Colchester v Crewe
 Doncaster v Chesterfield
 Fleetwood v Millwall
 Gillingham v Rochdale
 Oldham v Southend
 Peterborough v Barnsley
 Port Vale v Blackpool
 Sheff Utd v Shrewsbury
 Swindon v Walsall
 Wigan v Burton

Saturday 28th November

Barnsley v Sheff Utd
 Blackpool v Fleetwood
 Burton v Colchester
 Chesterfield v Swindon
 Coventry v Doncaster
 Crewe v Oldham
 Millwall v Bury
 Rochdale v Port Vale
 Scunthorpe v Peterborough
 Shrewsbury v Gillingham
 Southend v Wigan
 Walsall v Bradford

Tuesday 1st December

Burton v Millwall
 Shrewsbury v Walsall



PRESSING MATTERS

How good is it to have that winning feeling back? Two goals, three points and a smile back on everyone's faces once again.

I'm writing these notes before the weekend trip to Fleetwood so I'm still currently basking in the three points earned against Scunthorpe the week before. Hopefully that feeling would have continued into this week after a successful trip to the Fylde coast loaded down with three points and the memory of a delicious portion of fish and chips still fresh in the mind. 'Phys', if you're reading this, I *definitely* went for the healthy option instead...

Walsall could probably claim to be one of Town's bogey sides at the County Ground if one examines their record at SN1. If you start from 1988 and Steve Foley's goal in a 1-0 win, Town have only beaten the Saddlers twice at home since: remember Jamie Cureton's half-volley in a 1-0 win in 2006? What about THAT Simon Cox volley that helped seal a 3-2 win for the home side in 2009? Judging by that, if someone scores a screamer for Town this evening then we'll be looking at the three points staying in Wiltshire.

I know that Sam Parkin has already touched on it in his notes and I wouldn't be able to add much more to the sentiments expressed in his column but what a wonderful show of solidarity at Wembley (and across Europe) this time last week. Be it at football, rugby, the Olympics or indeed any sporting occasion, the singing of the national anthems is something that I always try and watch because of the emotions it seems to awaken in those present. The Marseillaise is one of those revolutionary anthems that is probably the most deserving of the adjective 'stirring' and to hear Wembley as a collective join in with its singing last week was a very emotionally-charged moment.

I'd like to finish this week by wishing a very fond farewell to Sian Griffiths who is leaving the staff here at SN1 to move on to pastures new. A lot of regular visitors to the CG will recognise Sian from her matchday role, greeting the hospitality guests as they enter the stadium. Sian was also the club's Charity co-ordinator and, most recently, was a very welcome helper in proofing the matchday programme! On behalf of all my colleagues here at the club, thank you, Sian and all the very best!

Tom Otrebski
RED & WHITE EDITOR



"I'm still currently basking in the three points earned against Scunthorpe the week before."



**WE'RE MAKING
FOOTBALL LEAGUE
BETTING BETTER**

sky BET

MORE MARKETS

**ON YOUR TEAM THAN ANY
OTHER BOOKMAKER**

ARE YOU IN?

skybet.com/FL72

18+ only. Terms and conditions apply. More Markets refers to Outright Markets, comparison made using Oddschecker. For more information visit skybet.com/FL72. GAMBLE RESPONSIBLY. FOR MORE INFORMATION VISIT WWW.GAMBLEAWARE.CO.UK

swindon

Swindon Town Football Club

TONIGHT'S SPONSORS

Match Sponsor



Matchball Sponsor

**HAINE
& SMITH**

Programme Sponsor

**Morgan
Stanley**

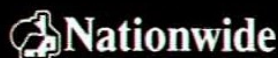
MAIN CLUB SPONSORS

**IMAGINE
CRUISING**



DAVID M. COE
FINANCIAL PLANNING LTD

C | F | M
COTSWOLD
FARM MACHINERY



OFFICIAL CLUB PARTNERS



allenford



Centerplate

BBC WILTSHIRE

101.5 FM | 104.3 FM | DAB | bbc.co.uk/wiltshire



PEBLEY BEACH



ARKELL'S
FAMILY BREWERS

BARNES

